

Sample Name: **Peaches n Cream**
 Tested for: **SoFresh Farms**
Compliance - Usable

Laboratory ID: 18D0006-01

Matrix: Useable Marijuana

Sample Metrc ID: 1A4010300001E17000002418

Lot # GH R1 PnC 3/20/2018

Batch RFID: 1A4010300001E17000002398

Batch Size: 5312.9 (g)

Strain: Peaches n Cream

Date Sampled: 04/03/18 09:57

Date Accepted: 04/03/18

Results Valid Until: 04/03/19



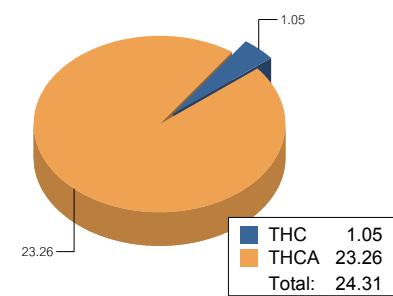
Potency Analysis

Date Extracted: 04/04/18

Analysis Method/SOP: Potency

Date Analyzed: 04/04/18

* - ORELAP certified analyte

Cannabinoids	% weight	mg/g	Cannabinoids Profile
Total THC ((THCA*0.877)+d9)	21.45	214.5	
Total CBD ((CBDA*0.877)+CBD)	< LOQ	< LOQ	
d9-THC (d9-Tetrahydrocannabinol)*	1.05	10.5	
d8-THC (d8-Tetrahydrocannabinol)*	< LOQ	< LOQ	
THCA (d9-Tetrahydrocannabinolic Acid)*	23.26	232.6	
CBD (Cannabidiol)*	< LOQ	< LOQ	
CBDA (Cannabidiolic Acid)*	< LOQ	< LOQ	
CBN (Cannabinol)*	< LOQ	< LOQ	
CBG (Cannabigerol)*	< LOQ	< LOQ	
CBGA (Cannabigerolic Acid)	< LOQ	< LOQ	
CBDV (Cannabidivarin)*	< LOQ	< LOQ	
CBDVA (Cannabidivarinic Acid)	< LOQ	< LOQ	
CBC (Cannabichromene)*	< LOQ	< LOQ	
THCV (Tetrahydrocannabivarin)	< LOQ	< LOQ	
Total Cannabinoids	24.86	248.6	

Water Activity and Moisture

Analyte	Result	Limit	Units	LOQ	Analyzed	Method
Water Activity	0.420	0.65	AW	0.0300	04/04/2018	Water Activity
Percent Moisture	12.1	15	%	0.10	04/04/2018	Moisture

Cannabinoids reported as dry weight (moisture corrected)

Results above the action level are highlighted in red #.

<LOQ - Results below the Limit of Quantitation - Compound not detected



Angelica Serr For Brian Weigel
 Lab Director

These results relate only to the sample included on this report. The report may not be reproduced except in full, without the written permission of SC Laboratories. Samples tested in accordance with Oregon Administrative Rules, TNI 2009 Standard and SC Laboratories quality assurance plan unless otherwise noted.

Sample Name: Peaches n Cream	Date Sampled: 04/03/18 09:57
Tested for: SoFresh Farms	Date Accepted: 04/03/18
Compliance - Usable	Results Valid Until: 04/03/19
Laboratory ID: 18D0006-01 Strain: Peaches n Cream	Sample Metrc ID: 1A4010300001E17000002418
Matrix: Useable Marijuana	Batch RFID: 1A4010300001E17000002398
Lot # GH R1 PnC 3/20/2018	Batch Size: 5312.9 (g)

Terpene Analysis

Date Extracted: 04/04/18 Analysis Method/SOP: Potency
Date Analyzed: 04/04/18

Analyte	Result (%)	LOQ	Analyte	Result	LOQ
alpha Pinene	0.425	0.020	Myrcene	2.053	0.020
alpha Phellandrene	< LOQ	0.020	3-Carene	< LOQ	0.020
alpha Terpinene	< LOQ	0.020	Limonene	0.283	0.020
Terpinolene	< LOQ	0.020	Linalool	0.110	0.020
Fenchol	0.030	0.020	Borneol	< LOQ	0.020
Terpineol	0.031	0.020	Geraniol	< LOQ	0.020
alpha Humulene	0.063	0.020	beta Caryophyllene	0.170	0.020
Caryophyllene Oxide	< LOQ	0.020	alpha Bisabolol	0.026	0.020
Camphene	< LOQ	0.020	beta Pinene	0.227	0.020
Ocimene	< LOQ	0.020	Sabinene	< LOQ	0.020
Camphor	< LOQ	0.020	Isoborneol	< LOQ	0.020
Menthol	< LOQ	0.020	alpha Cedrene	< LOQ	0.020
Nerolidol	< LOQ	0.020	R-(+)-Pulegone	< LOQ	0.020
Eucalyptol	< LOQ	0.020	p-Cymene	< LOQ	0.020
(-)-Isopulegol	< LOQ	0.020	Geranyl Acetate	< LOQ	0.020
Guaiol	0.074	0.020	Valencene	0.045	0.020
Phytol	0.056	0.020	Citronellol	< LOQ	0.020
gamma-Terpinene	< LOQ	0.020			
			Total Terpenes	3.595 %	

<LOQ - Results below the Limit of Quantitation - Compound not detected
Terpene Analysis is not ORELAP Accredited.

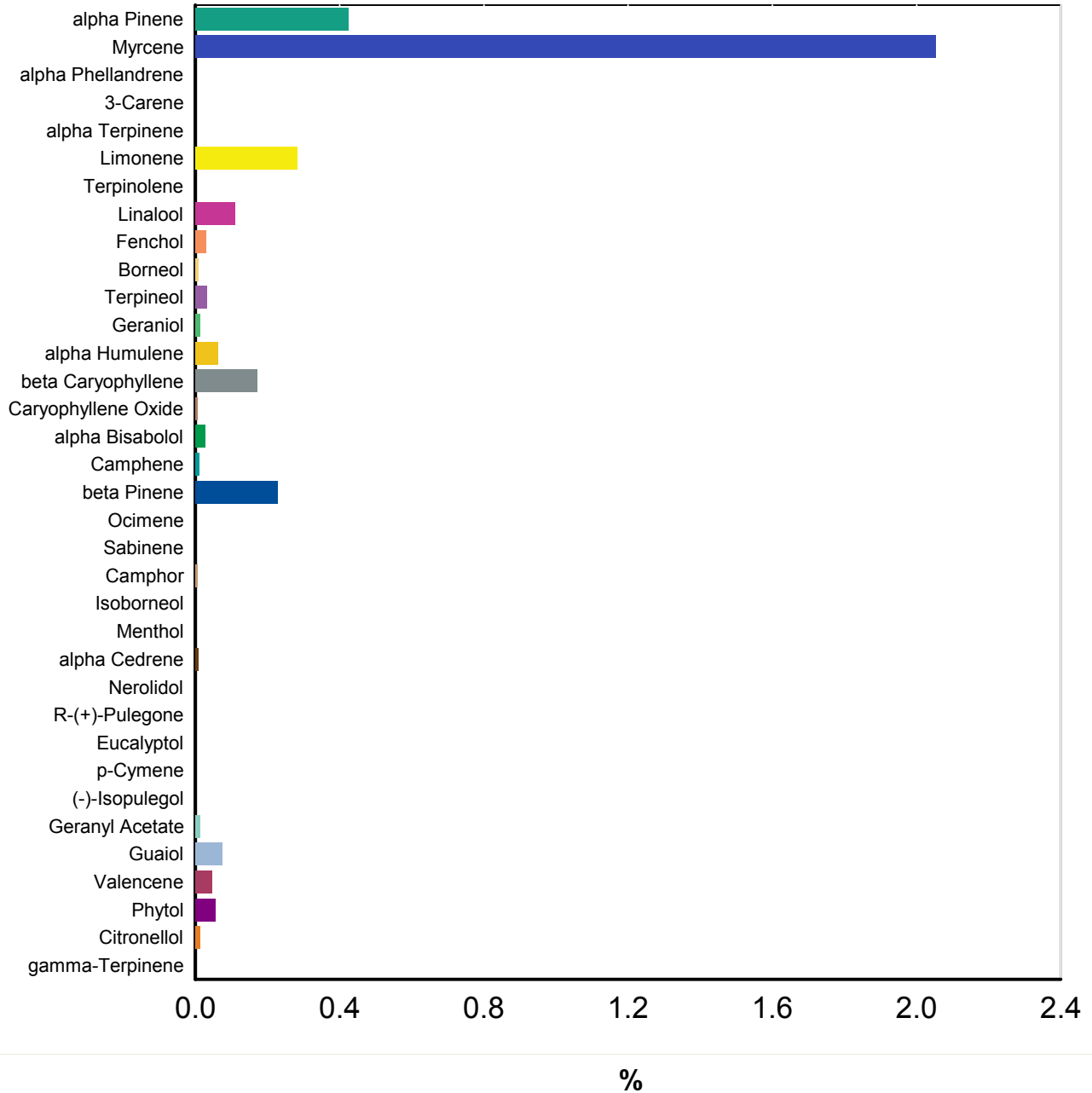


Angelica Serr For Brian Weigel
Lab Director

These results relate only to the sample included on this report. The report may not be reproduced except in full, without the written permission of SC Laboratories. Samples tested in accordance with Oregon Administrative Rules, TNI 2009 Standard and SC Laboratories quality assurance plan unless otherwise noted.

Sample Name: Peaches n Cream	Date Sampled: 04/03/18 09:57
Tested for: SoFresh Farms	Date Accepted: 04/03/18 11:20
Compliance - Usable	Results Valid Until: 04/03/19
Laboratory ID: 18D0006-01	Matrix: Useable Marijuana
Client/Metr ID: 1A4010300001E17000002418	

Terpene Profile




Angelica Serr For Brian Weigel
Lab Director

These results relate only to the sample included on this report. The report may not be reproduced except in full, without the written permission of SC Laboratories. Samples tested in accordance with Oregon Administrative Rules, TNI 2009 Standard and SC Laboratories quality assurance plan unless otherwise noted.

Sample Name: **Peaches n Cream** Date Sampled: **04/03/18 09:57**
 Tested for: **SoFresh Farms** Date Accepted: **04/03/18**
Compliance - Usable Results Valid Until: **04/03/19**

Laboratory ID: **18D0006-01** Strain: **Peaches n** Sample Metrc ID: **1A4010300001E17000002418**
 Matrix: **Useable Marijuana** Batch RFID: **1A4010300001E17000002398**
 Lot # **GH R1 PnC 3/20/2018** Batch Size: **5312.9 (g)**

Pesticide Analysis in ppm

Date Extracted: 04/04/18 Analysis Method/SOP: Pesticides
 Date Analyzed: 04/04/18 Results above the action levels are highlighted in red #.

Analyte	Result	Action Level	LOQ	Analyte	Result	Action Level	LOQ
Abamectin	< LOQ	0.5	0.25	Acephate	< LOQ	0.4	0.20
Acequinocyl	< LOQ	2	1.00	Acetamiprid	< LOQ	0.2	0.10
Aldicarb	< LOQ	0.4	0.20	Azoxystrobin	< LOQ	0.2	0.10
Bifenazate	< LOQ	0.2	0.10	Bifenthrin	< LOQ	0.2	0.10
Boscalid	< LOQ	0.4	0.20	Carbaryl	< LOQ	0.2	0.10
Carbofuran	< LOQ	0.2	0.10	Chlorantraniliprole	< LOQ	0.2	0.10
Chlorfenapyr	< LOQ	1	0.50	Chlorpyrifos	< LOQ	0.2	0.10
Clofentezine	< LOQ	0.2	0.10	Cyfluthrin	< LOQ	1	0.50
Cypermethrin	< LOQ	1	0.50	Daminozide	< LOQ	1	0.50
DDVP (Dichlorvos)	< LOQ	1	0.50	Diazinon	< LOQ	0.2	0.10
Dimethoate	< LOQ	0.2	0.10	Ethoprophos	< LOQ	0.2	0.10
Etofenprox	< LOQ	0.4	0.20	Etoxazole	< LOQ	0.2	0.10
Fenoxycarb	< LOQ	0.2	0.10	Fenpyroximate	< LOQ	0.4	0.20
Fipronil	< LOQ	0.4	0.20	Fonicamid	< LOQ	1	0.50
Fludioxonil	< LOQ	0.4	0.20	Hexythiazox	< LOQ	1	0.50
Imazalil	< LOQ	0.2	0.10	Imidacloprid	< LOQ	0.4	0.20
Kresoxim-methyl	< LOQ	0.4	0.20	Malathion	< LOQ	0.2	0.10
Metalaxyl	< LOQ	0.2	0.10	Methiocarb	< LOQ	0.2	0.10
Methomyl	< LOQ	0.4	0.20	Methyl parathion	< LOQ	0.2	0.10
MGK-264	< LOQ	0.2	0.10	Myclobutanil	< LOQ	0.2	0.10
Naled	< LOQ	0.5	0.25	Oxamyl	< LOQ	1	0.50
Paclobutrazol	< LOQ	0.4	0.20	Permethrins (total)	< LOQ	0.2	0.10
Phosmet	< LOQ	0.2	0.10	Piperonyl butoxide	< LOQ	2	0.50
Prallethrin	< LOQ	0.2	0.10	Propiconazole	< LOQ	0.4	0.20
Propoxur	< LOQ	0.2	0.10	Pyrethrins (total)	< LOQ	1	0.50
Pyridaben	< LOQ	0.2	0.10	Spinosad	< LOQ	0.2	0.10
Spiromesifen	< LOQ	0.2	0.10	Spirotetramat	< LOQ	0.2	0.10
Spiroxamine	< LOQ	0.4	0.20	Tebuconazole	< LOQ	0.4	0.20
Thiacloprid	< LOQ	0.2	0.10	Thiamethoxam	< LOQ	0.2	0.10
Trifloxystrobin	< LOQ	0.2	0.10				

<LOQ - Results below the Limit of Quantitation - Compound not detected



Angelica Serr For Brian Weigel
 Lab Director

These results relate only to the sample included on this report. The report may not be reproduced except in full, without the written permission of SC Laboratories. Samples tested in accordance with Oregon Administrative Rules, TNI 2009 Standard and SC Laboratories quality assurance plan unless otherwise noted.

Case Narrative

Terpenes- Alpha Humulene and Phytol exceeded normally accepted QC criteria in the sample duplicate. Due to relatively large variations in very small values calculated high RPD.

**Quality Control
Potency**

Batch: B180208 - Potency/Terpenes

Blank(B180208-BLK1)			Extracted - 04/04/18 9:24 Analyzed - 04/04/18 17:33					
Analyte	Result	Units	Spike Level	Source Result	%REC	%REC Limits	RPD	RPD Limit
d9-THC (d9-Tetrahydrocannabinol)	< LOQ	%						
d8-THC (d8-Tetrahydrocannabinol)	< LOQ	%						
THCA (d9-Tetrahydrocannabinolic Acid)	< LOQ	%						
CBD (Cannabidiol)	< LOQ	%						
CBDA (Cannabidiolic Acid)	< LOQ	%						
CBN (Cannabinol)	< LOQ	%						
CBG (Cannabigerol)	< LOQ	%						
CBGA (Cannabigerolic Acid)	< LOQ	%						
CBDV (Cannabidivarin)	< LOQ	%						
CBDVA (Cannabidivarinic Acid)	< LOQ	%						
CBC (Cannabichromene)	< LOQ	%						
THCV (Tetrahydrocannabivarin)	< LOQ	%						

Duplicate(B180208-DUP1)			Extracted - 04/04/18 9:24 Analyzed - 04/04/18 17:50					
Analyte	Result	Units	Spike Level	Source Result	%REC	%REC Limits	RPD	RPD Limit
d9-THC (d9-Tetrahydrocannabinol)	3.19	%		3.41			6.58	20
d8-THC (d8-Tetrahydrocannabinol)	< LOQ	%		< LOQ				20
THCA (d9-Tetrahydrocannabinolic Acid)	21.20	%		22.44			5.68	20
CBD (Cannabidiol)	< LOQ	%		< LOQ				20
CBDA (Cannabidiolic Acid)	0.04	%		0.04			1.24	20
CBN (Cannabinol)	< LOQ	%		< LOQ				20
CBG (Cannabigerol)	0.05	%		0.05			1.26	20
CBGA (Cannabigerolic Acid)	0.64	%		0.68			6.65	20
CBDV (Cannabidivarin)	< LOQ	%		< LOQ				20
CBDVA (Cannabidivarinic Acid)	0.05	%		0.04			18.8	20
CBC (Cannabichromene)	< LOQ	%		< LOQ				20
THCV (Tetrahydrocannabivarin)	0.11	%		0.12			4.39	20

LCS(B180208-BS1)			Extracted - 04/04/18 9:24 Analyzed - 04/05/18 10:00					
Analyte	Result	Units	Spike Level	Source Result	%REC	%REC Limits	RPD	RPD Limit



Angelica Serr For Brian Weigel
Lab Director

These results relate only to the sample included on this report. The report may not be reproduced except in full, without the written permission of SC Laboratories. Samples tested in accordance with Oregon Administrative Rules, TNI 2009 Standard and SC Laboratories quality assurance plan unless otherwise noted.

**Quality Control
 Potency (Continued)**

Batch: B180208 - Potency/Terpenes (Continued)

LCS(B180208-BS1)		Extracted - 04/04/18 9:24 Analyzed - 04/05/18 10:00						
Analyte	Result	Units	Spike Level	Source Result	%REC	%REC Limits	RPD	RPD Limit
d9-THC (d9-Tetrahydrocannabinol)	0.05	%	0.0400		114	80-120		
CBD (Cannabidiol)	0.04	%	0.0400		112	80-120		
CBDA (Cannabidiolic Acid)	0.04	%	0.0400		102	80-120		
CBN (Cannabinol)	0.04	%	0.0400		98.0	80-120		



Angelica Serr For Brian Weigel
 Lab Director

These results relate only to the sample included on this report. The report may not be reproduced except in full, without the written permission of SC Laboratories. Samples tested in accordance with Oregon Administrative Rules, TNI 2009 Standard and SC Laboratories quality assurance plan unless otherwise noted.

Quality Control Pesticide Analysis

Batch: B180207 - Pesticide Prep

Blank(B180207-BLK1)		Extracted - 04/04/18 9:20 Analyzed - 04/04/18 15:48						
Analyte	Result	Units	Spike Level	Source Result	%REC	%REC Limits	RPD	RPD Limit
Abamectin	< LOQ	ppm						
Acephate	< LOQ	ppm						
Acequinocyl	< LOQ	ppm						
Acetamiprid	< LOQ	ppm						
Aldicarb	< LOQ	ppm						
Azoxystrobin	< LOQ	ppm						
Bifenazate	< LOQ	ppm						
Bifenthrin	< LOQ	ppm						
Boscalid	< LOQ	ppm						
Carbaryl	< LOQ	ppm						
Carbofuran	< LOQ	ppm						
Chlorantraniliprole	< LOQ	ppm						
Chlorfenapyr	< LOQ	ppm						
Chlorpyrifos	< LOQ	ppm						
Clofentezine	< LOQ	ppm						
Cyfluthrin	< LOQ	ppm						
Cypermethrin	< LOQ	ppm						
Daminozide	< LOQ	ppm						
DDVP (Dichlorvos)	< LOQ	ppm						
Diazinon	< LOQ	ppm						
Dimethoate	< LOQ	ppm						
Ethoprophos	< LOQ	ppm						
Etofenprox	< LOQ	ppm						
Etoxazole	< LOQ	ppm						
Fenoxycarb	< LOQ	ppm						
Fenpyroximate	< LOQ	ppm						
Fipronil	< LOQ	ppm						
Fonicamid	< LOQ	ppm						
Fludioxonil	< LOQ	ppm						
Hexythiazox	< LOQ	ppm						
Imazalil	< LOQ	ppm						
Imidacloprid	< LOQ	ppm						
Kresoxim-methyl	< LOQ	ppm						
Malathion	< LOQ	ppm						
Metalaxyl	< LOQ	ppm						



Angelica Serr For Brian Weigel
Lab Director

These results relate only to the sample included on this report. The report may not be reproduced except in full, without the written permission of SC Laboratories. Samples tested in accordance with Oregon Administrative Rules, TNI 2009 Standard and SC Laboratories quality assurance plan unless otherwise noted.

Quality Control

Pesticide Analysis (Continued)

Batch: B180207 - Pesticide Prep (Continued)

Blank(B180207-BLK1)			Extracted - 04/04/18 9:20 Analyzed - 04/04/18 15:48					
Analyte	Result	Units	Spike Level	Source Result	%REC	%REC Limits	RPD	RPD Limit
Methiocarb	< LOQ	ppm						
Methomyl	< LOQ	ppm						
Methyl parathion	< LOQ	ppm						
MGK-264	< LOQ	ppm						
Myclobutanil	< LOQ	ppm						
Naled	< LOQ	ppm						
Oxamyl	< LOQ	ppm						
Paclbutrazol	< LOQ	ppm						
Permethrins (total)	< LOQ	ppm						
Phosmet	< LOQ	ppm						
Piperonyl butoxide	< LOQ	ppm						
Prallethrin	< LOQ	ppm						
Propiconazole	< LOQ	ppm						
Propoxur	< LOQ	ppm						
Pyrethrins (total)	< LOQ	ppm						
Pyridaben	< LOQ	ppm						
Spinosad	< LOQ	ppm						
Spiromesifen	< LOQ	ppm						
Spirotetramat	< LOQ	ppm						
Spiroxamine	< LOQ	ppm						
Tebuconazole	< LOQ	ppm						
Thiacloprid	< LOQ	ppm						
Thiamethoxam	< LOQ	ppm						
Trifloxystrobin	< LOQ	ppm						

LCS(B180207-BS1)			Extracted - 04/04/18 9:20 Analyzed - 04/05/18 10:02					
Analyte	Result	Units	Spike Level	Source Result	%REC	%REC Limits	RPD	RPD Limit
Acephate	0.95	ppm	1.00		94.7	70-130		
Acetamiprid	0.92	ppm	1.00		92.2	70-130		
Aldicarb	0.82	ppm	1.00		82.0	70-130		
Bifenazate	0.93	ppm	1.00		93.3	70-130		
Boscalid	0.82	ppm	1.00		81.6	70-130		
Chlorantraniliprole	0.91	ppm	1.00		91.0	70-130		
Chlorpyrifos	0.88	ppm	1.00		87.7	70-130		
Cyfluthrin	1.07	ppm	1.00		107	70-130		

Angie

Angelica Serr For Brian Weigel
Lab Director

These results relate only to the sample included on this report. The report may not be reproduced except in full, without the written permission of SC Laboratories. Samples tested in accordance with Oregon Administrative Rules, TNI 2009 Standard and SC Laboratories quality assurance plan unless otherwise noted.

Quality Control

Pesticide Analysis (Continued)

Batch: B180207 - Pesticide Prep (Continued)

LCS(B180207-BS1)		Extracted - 04/04/18 9:20 Analyzed - 04/05/18 10:02						
Analyte	Result	Units	Spike Level	Source Result	%REC	%REC Limits	RPD	RPD Limit
DDVP (Dichlorvos)	1.24	ppm	1.00		124	70-130		
Ethoprophos	0.91	ppm	1.00		90.8	70-130		
Etoxazole	0.76	ppm	1.00		76.5	70-130		
Fenoxycarb	0.85	ppm	1.00		84.5	70-130		
Flonicamid	0.99	ppm	1.00		99.3	70-130		
Imazalil	1.04	ppm	1.00		104	70-130		
Imidacloprid	1.03	ppm	1.00		103	70-130		
Methiocarb	0.91	ppm	1.00		90.9	70-130		
Myclobutanil	0.94	ppm	1.00		93.6	70-130		
Oxamyl	0.95	ppm	1.00		94.7	70-130		
Paclobutrazol	0.93	ppm	1.00		93.0	70-130		
Piperonyl butoxide	0.80	ppm	1.00		79.9	70-130		
Prallethrin	0.91	ppm	1.00		91.0	70-130		
Propoxur	0.87	ppm	1.00		87.2	70-130		
Spiromesifen	0.81	ppm	1.00		81.0	70-130		
Spiroxamine	0.49	ppm	1.00		49.2	70-130		
Thiacloprid	0.87	ppm	1.00		86.9	70-130		
Thiamethoxam	0.86	ppm	1.00		85.8	70-130		
Trifloxystrobin	0.87	ppm	1.00		87.0	70-130		

Matrix Spike(B180207-MS1)		Extracted - 04/04/18 9:20 Analyzed - 04/04/18 16:20						
Analyte	Result	Units	Spike Level	Source Result	%REC	%REC Limits	RPD	RPD Limit
Acephate	1.31	ppm	1.69	< LOQ	77.3	70-130		
Acetamiprid	1.58	ppm	1.69	< LOQ	93.2	70-130		
Aldicarb	1.46	ppm	1.69	< LOQ	86.1	70-130		
Bifenazate	1.70	ppm	1.69	< LOQ	100	70-130		
Boscalid	1.90	ppm	1.69	< LOQ	112	70-130		
Chlorantraniliprole	1.68	ppm	1.69	< LOQ	99.6	70-130		
Chlorpyrifos	1.62	ppm	1.69	< LOQ	95.7	70-130		
Cyfluthrin	2.09	ppm	1.69	< LOQ	123	70-130		
DDVP (Dichlorvos)	1.60	ppm	1.69	< LOQ	94.4	70-130		
Ethoprophos	1.58	ppm	1.69	< LOQ	93.2	70-130		
Etoxazole	1.55	ppm	1.69	< LOQ	91.8	70-130		
Fenoxycarb	1.49	ppm	1.69	< LOQ	88.2	70-130		
Flonicamid	1.51	ppm	1.69	< LOQ	89.6	70-130		

Angie

Angelica Serr For Brian Weigel
Lab Director

These results relate only to the sample included on this report. The report may not be reproduced except in full, without the written permission of SC Laboratories. Samples tested in accordance with Oregon Administrative Rules, TNI 2009 Standard and SC Laboratories quality assurance plan unless otherwise noted.

Quality Control

Pesticide Analysis (Continued)

Batch: B180207 - Pesticide Prep (Continued)

Matrix Spike(B180207-MS1)			Extracted - 04/04/18 9:20 Analyzed - 04/04/18 16:20					
Analyte	Result	Units	Spike Level	Source Result	%REC	%REC Limits	RPD	RPD Limit
Imazalil	1.83	ppm	1.69	< LOQ	108	70-130		
Imidacloprid	1.87	ppm	1.69	< LOQ	110	70-130		
Methiocarb	1.49	ppm	1.69	< LOQ	88.1	70-130		
Myclobutanil	1.64	ppm	1.69	< LOQ	97.0	70-130		
Oxamyl	1.32	ppm	1.69	< LOQ	77.8	70-130		
Paclobutrazol	1.51	ppm	1.69	< LOQ	89.5	70-130		
Piperonyl butoxide	1.50	ppm	1.69	< LOQ	88.5	70-130		
Prallethrin	1.57	ppm	1.69	< LOQ	92.6	70-130		
Propoxur	1.39	ppm	1.69	< LOQ	82.4	70-130		
Spiromesifen	1.43	ppm	1.69	< LOQ	84.7	70-130		
Spiroxamine	0.82	ppm	1.69	< LOQ	48.4	70-130		
Thiacloprid	1.51	ppm	1.69	< LOQ	89.0	70-130		
Thiamethoxam	1.40	ppm	1.69	< LOQ	83.1	70-130		
Trifloxystrobin	1.66	ppm	1.69	< LOQ	98.0	70-130		

Matrix Spike Dup(B180207-MSD1)			Extracted - 04/04/18 9:20 Analyzed - 04/04/18					
Analyte	Result	Units	Spike Level	Source Result	%REC	%REC Limits	RPD	RPD Limit
Acephate	1.31	ppm	1.70	< LOQ	77.1	70-130	0.280	30
Acetamiprid	1.70	ppm	1.70	< LOQ	100	70-130	7.21	30
Aldicarb	1.55	ppm	1.70	< LOQ	91.4	70-130	5.95	30
Bifenazate	1.65	ppm	1.70	< LOQ	97.0	70-130	3.49	30
Boscalid	1.76	ppm	1.70	< LOQ	104	70-130	8.01	30
Chlorantraniliprole	1.50	ppm	1.70	< LOQ	88.2	70-130	12.2	30
Chlorpyrifos	1.57	ppm	1.70	< LOQ	92.3	70-130	3.58	30
Cyfluthrin	2.32	ppm	1.70	< LOQ	136	70-130	10.0	30
DDVP (Dichlorvos)	1.68	ppm	1.70	< LOQ	98.8	70-130	4.53	30
Ethoprophos	1.56	ppm	1.70	< LOQ	92.1	70-130	1.25	30
Etoxazole	1.50	ppm	1.70	< LOQ	88.5	70-130	3.66	30
Fenoxycarb	1.40	ppm	1.70	< LOQ	82.7	70-130	6.38	30
Flonicamid	1.53	ppm	1.70	< LOQ	89.8	70-130	0.304	30
Imazalil	1.76	ppm	1.70	< LOQ	104	70-130	4.34	30
Imidacloprid	2.03	ppm	1.70	< LOQ	119	70-130	7.88	30
Methiocarb	1.46	ppm	1.70	< LOQ	85.9	70-130	2.59	30
Myclobutanil	1.61	ppm	1.70	< LOQ	94.8	70-130	2.33	30
Oxamyl	1.31	ppm	1.70	< LOQ	77.4	70-130	0.480	30

Angie

Angelica Serr For Brian Weigel
Lab Director

These results relate only to the sample included on this report. The report may not be reproduced except in full, without the written permission of SC Laboratories. Samples tested in accordance with Oregon Administrative Rules, TNI 2009 Standard and SC Laboratories quality assurance plan unless otherwise noted.

Quality Control Pesticide Analysis (Continued)

Batch: B180207 - Pesticide Prep (Continued)

Matrix Spike Dup(B180207-MSD1)			Extracted - 04/04/18 9:20 Analyzed - 04/04/18					
Analyte	Result	Units	Spike Level	Source Result	%REC	%REC Limits	RPD	RPD Limit
Paclbutrazol	1.48	ppm	1.70	< LOQ	86.9	70-130	2.86	30
Piperonyl butoxide	1.46	ppm	1.70	< LOQ	86.0	70-130	2.85	30
Prallethrin	1.56	ppm	1.70	< LOQ	91.9	70-130	0.713	30
Propoxur	1.50	ppm	1.70	< LOQ	88.5	70-130	7.08	30
Spiromesifen	1.45	ppm	1.70	< LOQ	85.6	70-130	1.07	30
Spiroxamine	0.86	ppm	1.70	< LOQ	50.7	70-130	4.52	30
Thiacloprid	1.65	ppm	1.70	< LOQ	97.1	70-130	8.75	30
Thiamethoxam	1.43	ppm	1.70	< LOQ	84.0	70-130	1.17	30
Trifloxystrobin	1.54	ppm	1.70	< LOQ	90.9	70-130	7.45	30



Angelica Serr For Brian Weigel
Lab Director

These results relate only to the sample included on this report. The report may not be reproduced except in full, without the written permission of SC Laboratories. Samples tested in accordance with Oregon Administrative Rules, TNI 2009 Standard and SC Laboratories quality assurance plan unless otherwise noted.

Quality Control Moisture Content

Batch: B180206 - Gravimetric

Duplicate(B180206-DUP1)			Extracted - 04/04/18 11:23			Analyzed - 04/04/18 11:23		
Analyte	Result	Units	Spike Level	Source Result	%REC	%REC Limits	RPD	RPD Limit
Percent Moisture	12.5	%		12.1			2.58	20

Batch: B180209 - Water Activity

Duplicate(B180209-DUP1)			Extracted - 04/04/18 12:54			Analyzed - 04/04/18 12:54		
Analyte	Result	Units	Spike Level	Source Result	%REC	%REC Limits	RPD	RPD Limit
Water Activity	0.432	AW		0.420			2.72	20

Batch: B180210 - Potency/Terpenes

Blank(B180210-BLK1)			Extracted - 04/04/18 9:27			Analyzed - 04/04/18 18:18		
Analyte	Result	Units	Spike Level	Source Result	%REC	%REC Limits	RPD	RPD Limit
alpha Pinene	< LOQ	%						
Myrcene	< LOQ	%						
alpha Phellandrene	< LOQ	%						
3-Carene	< LOQ	%						
alpha Terpinene	< LOQ	%						
Limonene	< LOQ	%						
Terpinolene	< LOQ	%						
Linalool	< LOQ	%						
Fenchol	< LOQ	%						
Borneol	< LOQ	%						
Terpineol	< LOQ	%						
Geraniol	< LOQ	%						
alpha Humulene	< LOQ	%						
beta Caryophyllene	< LOQ	%						
Caryophyllene Oxide	< LOQ	%						
alpha Bisabolol	< LOQ	%						
Camphene	< LOQ	%						
beta Pinene	< LOQ	%						
Ocimene	< LOQ	%						
Sabinene	< LOQ	%						
Camphor	< LOQ	%						
Isoborneol	< LOQ	%						
Menthol	< LOQ	%						
alpha Cedrene	< LOQ	%						



Angelica Serr For Brian Weigel
Lab Director

These results relate only to the sample included on this report. The report may not be reproduced except in full, without the written permission of SC Laboratories. Samples tested in accordance with Oregon Administrative Rules, TNI 2009 Standard and SC Laboratories quality assurance plan unless otherwise noted.

Quality Control

Terpene Analysis (Continued)

Batch: B180210 - Potency/Terpenes (Continued)

Blank(B180210-BLK1)			Extracted - 04/04/18 9:27 Analyzed - 04/04/18 18:18					
Analyte	Result	Units	Spike Level	Source Result	%REC	%REC Limits	RPD	RPD Limit
Nerolidol	< LOQ	%						
R-(+)-Pulegone	< LOQ	%						
Eucalyptol	< LOQ	%						
p-Cymene	< LOQ	%						
(-)-Isopulegol	< LOQ	%						
Geranyl Acetate	< LOQ	%						
Guaiol	< LOQ	%						
Valencene	< LOQ	%						
Phytol	0.145	%						
Citronellol	< LOQ	%						
gamma-Terpinene	< LOQ	%						

Duplicate(B180210-DUP1)			Extracted - 04/04/18 9:27 Analyzed - 04/04/18 18:18					
Analyte	Result	Units	Spike Level	Source Result	%REC	%REC Limits	RPD	RPD Limit
alpha Ocimene	< LOQ	%		< LOQ				20
alpha Terpineol	0.053	%		0.058			9.71	20
beta Ocimene	0.289	%		0.317			9.37	20
beta Terpineol	< LOQ	%		< LOQ				20
cis-Nerolidol	< LOQ	%		< LOQ				20
Phytol 1	< LOQ	%		< LOQ				20
Phytol 2	0.035	%		0.024			36.6	20
trans-Nerolidol	< LOQ	%		< LOQ				20
alpha Pinene	0.090	%		0.101			11.9	20
Myrcene	0.325	%		0.358			9.58	20
alpha Phellandrene	0.096	%		0.105			9.63	20
3-Carene	0.072	%		0.080			10.2	20
alpha Terpinene	0.051	%		0.053			3.75	20
Limonene	0.224	%		0.245			9.21	20
Terpinolene	1.851	%		1.983			6.90	20
Linalool	< LOQ	%		< LOQ				20
Fenchol	< LOQ	%		< LOQ				20
Borneol	< LOQ	%		< LOQ				20
Terpineol	0.053	%		0.058			9.71	20
Geraniol	0.045	%		0.051			13.8	20
alpha Humulene	0.032	%		0.043			28.8	20

Angie

Angelica Serr For Brian Weigel
Lab Director

These results relate only to the sample included on this report. The report may not be reproduced except in full, without the written permission of SC Laboratories. Samples tested in accordance with Oregon Administrative Rules, TNI 2009 Standard and SC Laboratories quality assurance plan unless otherwise noted.

Quality Control

Terpene Analysis (Continued)

Batch: B180210 - Potency/Terpenes (Continued)

Duplicate(B180210-DUP1)		Extracted - 04/04/18 9:27 Analyzed - 04/04/18 18:18						
Analyte	Result	Units	Spike Level	Source Result	%REC	%REC Limits	RPD	RPD Limit
beta Caryophyllene	0.106	%		0.120			13.0	20
Caryophyllene Oxide	< LOQ	%		< LOQ				20
alpha Bisabolol	< LOQ	%		< LOQ				20
Camphene	< LOQ	%		< LOQ				20
beta Pinene	0.161	%		0.179			10.5	20
Ocimene	< LOQ	%		< LOQ				20
Sabinene	< LOQ	%		< LOQ				20
Camphor	< LOQ	%		< LOQ				20
Isoborneol	< LOQ	%		< LOQ				20
Menthol	< LOQ	%		< LOQ				20
alpha Cedrene	< LOQ	%		< LOQ				20
Nerolidol	< LOQ	%		< LOQ				20
R-(+)-Pulegone	< LOQ	%		0.023				20
Eucalyptol	< LOQ	%		< LOQ				20
p-Cymene	< LOQ	%		< LOQ				20
(-)-Isopulegol	0.021	%		0.025			14.3	20
Geranyl Acetate	< LOQ	%		0.039				20
Guaiol	0.044	%		0.046			5.16	20
Valencene	0.039	%		0.047			17.5	20
Phytol	0.053	%		0.024			75.0	20
Citronellol	< LOQ	%		< LOQ				20
gamma-Terpinene	0.034	%		0.037			9.86	20



Angelica Serr For Brian Weigel
Lab Director

These results relate only to the sample included on this report. The report may not be reproduced except in full, without the written permission of SC Laboratories. Samples tested in accordance with Oregon Administrative Rules, TNI 2009 Standard and SC Laboratories quality assurance plan unless otherwise noted.

Client: Sofresh Farms Client License: 030-1003980D6B6 Date: 4/3/2018 Thermometer ID: T014
 Location: 27175 S Gribble Rd, Canby, OR 97013 Requestor: Andrew Montgomery Event ID: 18D005 Balance ID: SAMP_BAL_02
 Sampling SOP: SC-OR-SAMP-003 Sampler: Scott Forster Transporter: Scott Forster Hygrometer ID: Anemometer_02

Lab ORELAP ID: 4133
 Lab OLCC ID: 1004748743D

Weight used (g)	Weight Set ID	Acceptance Criteria	Initial Measured	Initial P/F	Final Measured	Final P/F
0.5	SAMP_CAL_02	±2.5%	0.5	P	0.5	P
200		±2.5%	199.98		199.98	



Container Type	METRC Harvest/Processing Lot ID #:				Product Type	Client Sample Name	Product Date	Batch Size (g)
Rubber Bin	GH R1 PNC 3/20/2018				Usable Marijuana	Peaches n Cream	3/20/2018	5312.9
METRC Batch ID	Product Temp (°C)	Humidity (%)	# of Containers	Sample Media	# Zones	# of Inc.	1" Sample Size (g)	Sample Name
1A4010300001E17000002398	12.1	39.5	1	Mylar Bag	4	9	3.2	Peaches n Cream Primary
Lab Sample ID	Container ID		Increment Zone	Sampling Media Wt. (g)	Wt. Inc+Media (g)	Increment Weight (g)	Sample METRC ID#	
18D0006-01	Peaches n Cream-1		A1		3.28	3.28	1A4010300001E17000002418	
18D0006-01	Peaches n Cream-1		A1		3.03	3.03	1A4010300001E17000002418	
18D0006-01	Peaches n Cream-1		A1		3.03	3.03	1A4010300001E17000002418	
18D0006-01	Peaches n Cream-1		A1		3.08	3.08	1A4010300001E17000002418	
18D0006-01	Peaches n Cream-1		A2		3.29	3.29	1A4010300001E17000002418	
18D0006-01	Peaches n Cream-1		A2		2.76	2.76	1A4010300001E17000002418	
18D0006-01	Peaches n Cream-1		A2		2.92	2.92	1A4010300001E17000002418	
18D0006-01	Peaches n Cream-1		A4		2.94	2.94	1A4010300001E17000002418	
18D0006-01	Peaches n Cream-1		A4		3.37	3.37	1A4010300001E17000002418	
Minimum Sample Size = 27.3g (Usable Marijuana Only)					Total Sample Mass = 27.7			
Observations and Abnormalities:		Batch #	Marks/Labels	Cont. Types/Sizes	Uniform	Plant Colors	Shape and Size	Sampling Plan

Container Type	METRC Harvest/Processing Lot ID #:				Product Type	Client Sample Name	Product Date	Batch Size (g)
Rubber Bin	GH R3 2017 DP				Usable Marijuana	Durban Poison	11/27/2017	1534.4
METRC Batch ID	Product Temp (°C)	Humidity (%)	# of Containers	Sample Media	# Zones	# of Inc.	1" Sample Size (g)	Sample Name
1A4010300001E17000002400	11.4	39.5	1	Mylar Bag	4	7	1.5	Durban Poison Primary
Lab Sample ID	Container ID		Increment Zone	Sampling Media Wt. (g)	Wt. Inc+Media (g)	Increment Weight (g)	Sample METRC ID#	
18D0006-02	Durban Poison-1		A2		1.44	1.44	1A4010300001E17000002419	
18D0006-02	Durban Poison-1		A2		1.54	1.54	1A4010300001E17000002419	
18D0006-02	Durban Poison-1		A2		1.46	1.46	1A4010300001E17000002419	
18D0006-02	Durban Poison-1		A2		1.38	1.38	1A4010300001E17000002419	
18D0006-02	Durban Poison-1		A3		1.51	1.51	1A4010300001E17000002419	
18D0006-02	Durban Poison-1		A4		1.88	1.88	1A4010300001E17000002419	
18D0006-02	Durban Poison-1		A4		1.78	1.78	1A4010300001E17000002419	

	Minimum Sample Size = 9.1g (Usable Marijuana Only)			Total Sample Mass = 10.99			
Observations and Abnormalities:	Batch #	Marks/Labels	Cont. Types/Sizes	Uniform	Plant Colors	Shape and Size	Sampling Plan



**OREGON LIQUOR CONTROL COMMISSION
CANNABIS TRANSPORTATION MANIFEST**



18D0006

All sales transactions are to be completed prior to transportation of any CANNABIS. The receiving entity may reject product delivered, but amount delivered must be limited to amount agreed upon in prior sales transaction.

Manifest #:	0000625368	Date Created:	4/3/2018 10:12 AM
Originating Entity:	sofresh farms	For OLCC Use Only	
Originating License Number:	020-100010499D8		
Address of Originating Entity:	27135 S Gribble Rd Canby, OR 97013		
Phone No. of Originating Entity:	503-849-9978		
Contact Phone No. for Inquiries:	503-888-2159		
Destination # 1:	SC Laboratories	Destination Phone No.:	707-339-0050
Destination License Number:	010-1004748743D	Date and Approximate Time of Departure:	4/3/2018 10:30 AM
Address of Destination:	15865 SW 74th Avenue Ste 110 Tigard, OR 97224	Date and Approximate Time of Arrival:	4/3/2018 11:30 AM
		Date/Time Received:	
		Notes: details for extenuating circumstances (e.g., road closure, flat tire, etc.)	
Route to be Traveled: Most direct route available			
Name of Person Transporting:	Scott Foster	Handler Permit No. of Driver:	020-100010499d8
State Driver's License No.:	a625521	Signature of Person Transporting:	
Make, Model, License Plate No.:	Subaru Crosstrek 051jsa		
Package Label	Harvest Name	Item Name	Weight/Quantity
1A4010300001E17000002418 Status: Shipped	GH R1 PnC 3/20/2018	Peaches n Cream Flower (Buds (by strain))	Shp: 27.7000 g
1A4010300001E17000002419 Status: Shipped	Duban poison GH R3 2017	Durban poison Flower (Buds (by strain))	Shp: 10.9900 g
PRODUCT REJECTION (if only a portion of shipment is rejected, circle that portion above)			
Name of Person Receiving or Rejecting Product:	SCOTT FORSTER		
I confirm that the contents of this shipment match weight records entered above, and I agree to take custody of those portions of this shipment not circled above. Those portions circled were returned to the individual delivering this shipment.			
Signature:	Scott Foster		Date: 4-3-18
Signature of individual taking receipt of rejected portion of this shipment:			



CHAIN OF CUSTODY

SC Laboratories Oregon LLC
 15865 SW 74th Avenue, Ste 110
 Tigard OR, 97224
 (503) 272-8830
 ORELAP ID # 4133
www.sci-labs.com

Client
 Sofresh Farms
 27175 S Gribble Rd,
 Canby, OR 97013

Date Sampled
 4/3/2018

OLCC License #
 030-1003980686

OLCC License Type
 Grower

Email
andrew@sofresh.farm

Phone
 503-888-2159

Sampler OLCC License #
 010-1004748743D

COC #
 1/1

Work Order #
 AS 4618 18D0006

Received By
 SF

Received Date
 4.3.18

Courier
 Scott Forster

Name of Sampler
 Scott Forster

Transfer Manifest #
 625368

Place where Sampled
 27175 S Gribble Rd, Canby, OR 97013

Sample Type Legend
 U - Usable Marijuana
 C - Concentrate
 P - Product
 O - Other

TESTS REQUESTED

Sample Name	Time	METRC Label	Unique Batch Number	SC Labs LIMS ID	Sample Type	Total Sample Mass	# of Increments	Potency	Water Activity	Moisture Content	Pesticide	Residual Solvent	Terpene	Sample Specific Notes
Peaches n Cream Primary	9:57	1A4010300001E17000002418	Peaches n Cream	18D0006-01	U	27.7	9	X	X	X	X	X	X	
Durban Poison Primary	10:04	1A4010300001E17000002419	Durban Poison	18D0006-02	U	10.99	7	X	X	X	X	X	X	
				SP										

Notes/Special Considerations: Opt OUT of Sample Duplicate Yes No

Samples Relinquished
 Print Name: JOHN HAYES Date: 4/3/2018
 Representative of: SO FRESH
 Signature: [Signature] Time: 10:20

Samples Received
 Print Name: SCOTT FORSTER Date: 4.3.18
 Representative of: SC LABS
 Signature: [Signature] Time: 10:20

Samples Relinquished
 Print Name: _____ Date: _____
 Representative of: _____
 Signature: _____ Time: _____

Samples Received
 Print Name: _____ Date: _____
 Representative of: _____
 Signature: _____ Time: _____