


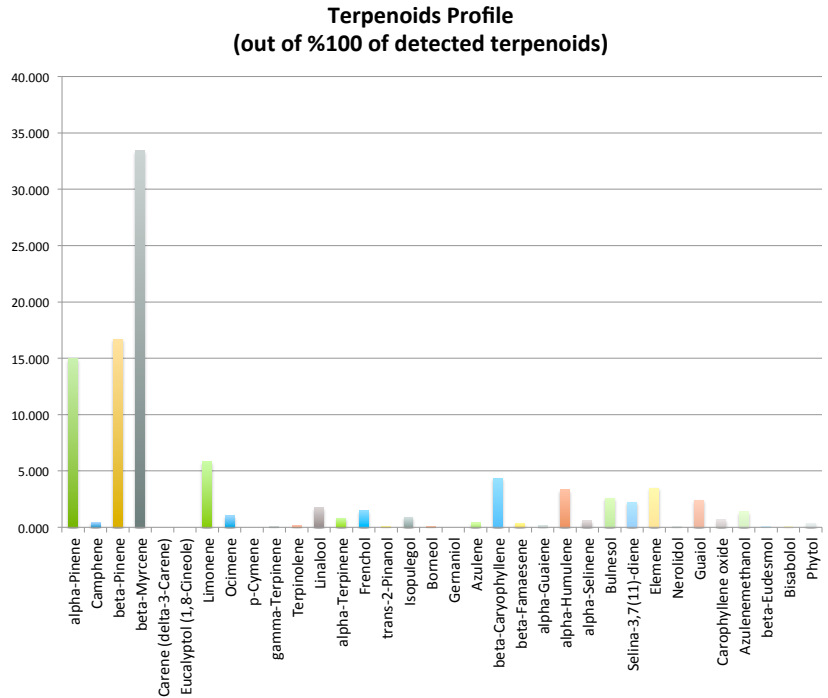


A⁺ANALYTICAL
oregon's leader in cannabis safety and analysis

**8700 SW 26th Ave Suite L
Portland, OR 97219
(503)954-3972
www.3BAnalytical.com
test@3BAnalytical.com**

Oregon Medical Marijuana Certificate of Analysis

Lab Report			Test Date: 6/2/16	Tracking#: 36126
Analysis	Method	Instrument	Batch: Nuken	Source: sofresh farms
Pesticide	GC/MS	Clarus 680/SQ8T		Matrix: Flower
Potency	GC/FID	Clarus 680/SQ8T		3.08 %Terpenes
Mold/Mildew	Petrifilm	N/A		<small>detected by weight</small>
Terpene	GC/FID	Clarus 680		Dominant Terpene(s)
Terpene Profile				
Terpene	% by weight	% by total		
alpha-Pinene	0.461	14.972	1.03	% beta-Myrcene
Camphene	0.014	0.455		
beta-Pinene	0.513	16.661		
beta-Myrcene	1.029	33.420	0.51	% beta-Pinene
Carene (delta-3-Carene)	0.000	0.000		
Eucalyptol (1,8-Cineole)	0.000	0.000		
Limonene	0.179	5.814		
Ocimene	0.031	1.007		
p-Cymene	0.000	0.000		
gamma-Terpinene	0.002	0.065		
Terpinolene	0.004	0.130		
Linalool	0.054	1.754		
alpha-Terpinene	0.025	0.812		
Frenchol	0.046	1.494		
trans-2-Pinanol	0.002	0.065		
Isopulegol	0.027	0.877		
Borneol	0.002	0.065		
Gernaniol	0.000	0.000		
Azulene	0.012	0.390		
beta-Caryophyllene	0.134	4.352		
beta-Famaesene	0.011	0.357		
alpha-Guaiene	0.004	0.130		
alpha-Humulene	0.102	3.313		
alpha-Selinene	0.018	0.585		
Bulnesol	0.079	2.566		
Selina-3,7(11)-diene	0.069	2.241		
Elemene	0.107	3.475		
Nerolidol	0.002	0.065		
Guaiol	0.074	2.403		
Carophyllene oxide	0.021	0.682		
Azulenemethanol	0.043	1.397		
beta-Eudesmol	0.001	0.032		
Bisabolol	0.002	0.065		
Phytol	0.011	0.357		
Total	3.079	100.000		



Comments:

Quality Assurance Manager/Lab Director