




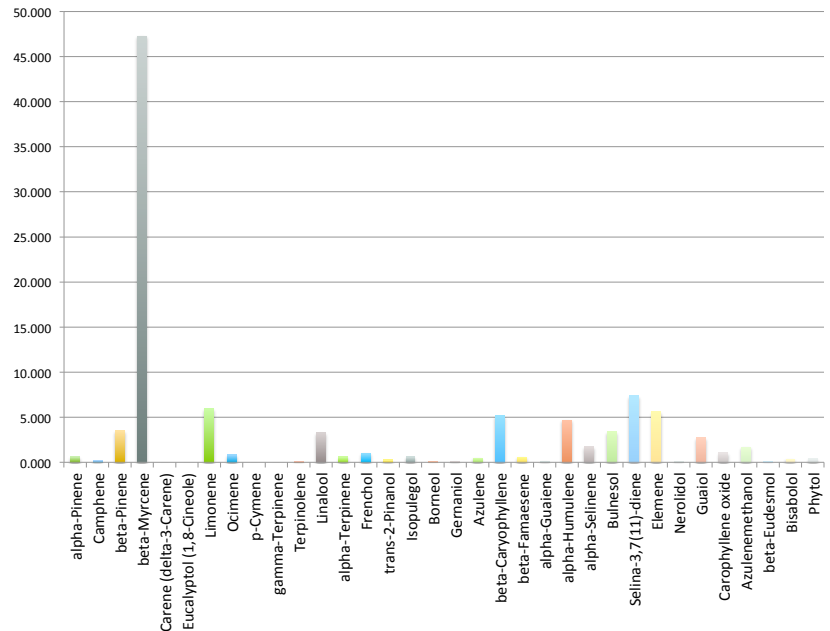
ANALYTICAL
oregon's leader in cannabis safety and analysis

**8700 SW 26th Ave Suite L
Portland, OR 97219
(503)954-3972
www.3BAnalytical.com
test@3BAnalytical.com**

Oregon Medical Marijuana Certificate of Analysis

Lab Report			Test Date: 6/2/16	Tracking#: 36127
Analysis	Method	Instrument	Batch: Black Betty	Source: sofresh farms
Pesticide	GC/MS	Clarus 680/SQ8T		Matrix: Flower
Potency	GC/FID	Clarus 680/SQ8T		4.25 % Terpenes
Mold/Mildew	Petriefilm	N/A		<small>detected by weight</small>
Terpene	GC/FID	Clarus 680		Dominant Terpene(s)
Terpene Profile				
Terpene	% by weight	% by total		
alpha-Pinene	0.027	0.635		
Camphene	0.009	0.212		
beta-Pinene	0.150	3.530		
beta-Myrcene	2.009	47.282		
Carene (delta-3-Carene)	0.000	0.000		
Eucalyptol (1,8-Cineole)	0.000	0.000		
Limonene	0.252	5.931		
Ocimene	0.036	0.847		
p-Cymene	0.000	0.000		
gamma-Terpinene	0.000	0.000		
Terpinolene	0.004	0.094		
Linalool	0.140	3.295		
alpha-Terpinene	0.026	0.612		
Fenchol	0.042	0.988		
trans-2-Pinanol	0.011	0.259		
Isopulegol	0.026	0.612		
Borneol	0.002	0.047		
Gernaniol	0.005	0.118		
Azulene	0.020	0.471		
beta-Caryophyllene	0.219	5.154		
beta-Famaesene	0.025	0.588		
alpha-Guaiene	0.006	0.141		
alpha-Humulene	0.198	4.660		
alpha-Selinene	0.075	1.765		
Bulnesol	0.144	3.389		
Selina-3,7(11)-diene	0.314	7.390		
Elemene	0.239	5.625		
Nerolidol	0.004	0.094		
Guaiol	0.116	2.730		
Carophyllene oxide	0.045	1.059		
Azulenemethanol	0.070	1.647		
beta-Eudesmol	0.003	0.071		
Bisabolol	0.015	0.353		
Phytol	0.017	0.400		
Total	4.249	100.000		

Terpenoids Profile
(out of %100 of detected terpenoids)



Comments:

Megan Brook

Quality Assurance Manager/Lab Director