


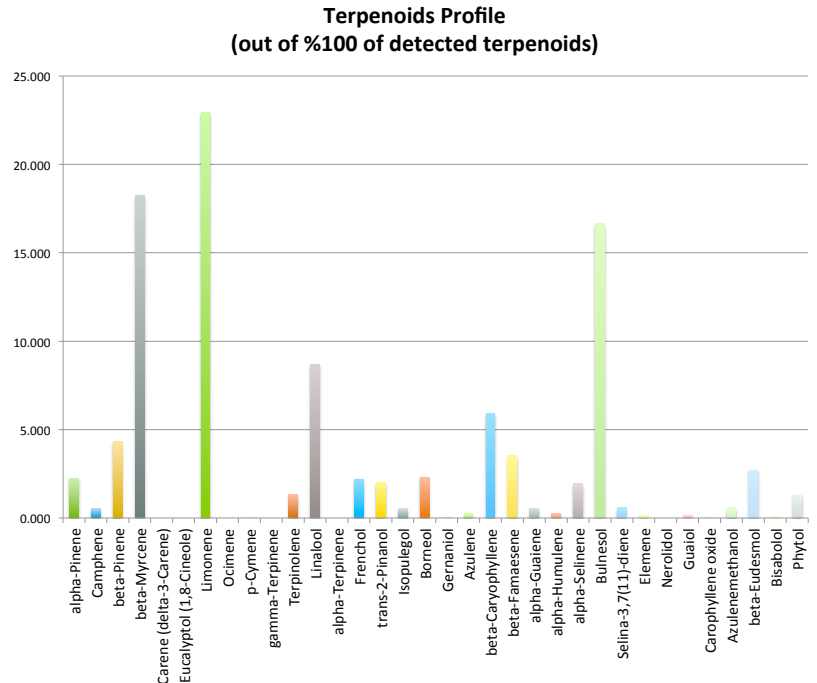


8700 SW 26th Ave Suite L  
 Portland, OR 97219  
 (503)954-3972  
 www.3BAnalytical.com  
 test@3BAnalytical.com

**ANALYTICAL**  
 oregon's leader in cannabis safety and analysis

**Oregon Medical Marijuana Certificate of Analysis**

Lab Report			Test Date: 11/2/15	Tracking#: 29707	
Analysis	Method	Instrument	<b>Batch: Platinum Kush</b>	<b>Source: So Fresh</b>	
Pesticide	GC/MS	Clarus 680/SQ8T			<b>Matrix: Flower</b>
Potency	GC/FID	Clarus 680/SQ8T			<b>3.07 % Terpenes</b>
Mold/Mildew (aerobic option)	Petrifilm Culture	N/A			<b>detected by weight</b>
Terpene	GC/FID	Clarus 680/SQ8T	<b>Dominant Terpene(s)</b>		
<b>Terpene Profile</b>				<b>0.71 % Limonene</b>	
Terpene	% by weight	% by total		<b>0.56 % beta-Myrcene</b>	
alpha-Pinene	0.069	2.247		<b>detected by weight</b>	
Camphene	0.016	0.521			
beta-Pinene	0.132	4.298			
beta-Myrcene	0.560	18.235			
Carene (delta-3-Carene)	0.000	0.000			
Eucalyptol (1,8-Cineole)	0.000	0.000			
Limonene	0.705	22.957			
Ocimene	0.000	0.000			
p-Cymene	0.001	0.033			
gamma-Terpinene	0.000	0.000			
Terpinolene	0.041	1.335			
Linalool	0.267	8.694			
alpha-Terpinene	0.000	0.000			
Frenchol	0.067	2.182			
trans-2-Pinanol	0.061	1.986			
Isopulegol	0.016	0.521			
Borneol	0.071	2.312			
Gernaniol	0.001	0.033			
Azulene	0.007	0.228			
beta-Caryophyllene	0.182	5.926			
beta-Famaesene	0.108	3.517			
alpha-Guaiene	0.017	0.554			
alpha-Humulene	0.008	0.261			
alpha-Selinene	0.060	1.954			
Bulnesol	0.511	16.640			
Selina-3,7(11)-diene	0.018	0.586			
Elemene	0.005	0.163			
Nerolidol	0.000	0.000			
Guaiol	0.005	0.163			
Carophyllene oxide	0.001	0.033			
Azulenemethanol	0.018	0.586			
beta-Eudesmol	0.083	2.703			
Bisabolol	0.002	0.065			
Phytol	0.039	1.270			
<b>Total</b>	<b>3.071</b>	<b>100.000</b>			



**Comments:**

*May-Burk*

Quality Assurance Manager/Lab Director