



A⁺ANALYTICAL
oregon's leader in cannabis safety and analysis

8700 SW 26th Ave Suite L
Portland, OR 97219
(503)954-3972
www.3BA analytical.com
test@3BA analytical.com

Oregon Medical Marijuana Certificate of Analysis

Lab Report

| Analysis | Method | Instrument |
|-------------|-----------|-----------------|
| Pesticide | GC/MS | Clarus 680/SQ8T |
| Potency | GC/FID | Clarus 680 |
| Mold/Mildew | Petrifilm | N/A |
| Terpene | GC/FID | Clarus 680 |

Moisture Analysis

| Sample | Mass (g) | %Solid | %H2O |
|---------------------------|----------|--------|------|
| Initial (received weight) | 0.99 | 92.09 | 7.91 |
| Final (dehydrated weight) | 0.91 | 100.00 | 0.00 |

Potency Profile

| Cannabinoid | %H2O Corrected | %Total |
|--------------------------------|----------------|--------|
| Tetrahydrocannabinol (THC) | 20.37 | 22.12 |
| -Δ9 Tetrahydrocannabinol (THC) | 20.24 | 21.984 |
| -Δ8 Tetrahydrocannabinol (THC) | 0.03 | 0.038 |
| -Cannabinol (CBN) | 0.09 | 0.093 |
| Cannabidiol (CBD) | 0.06 | 0.061 |
| Cannabigerol (CBG) | 0.50 | 0.545 |
| Cannabichromeone (CBC) | 0.30 | 0.327 |

Microbial Analysis

| Culture | CFU/g | Pass/Fail |
|-------------|--------|-----------|
| Mold/Mildew | <10000 | Pass |

Summary of Pesticide Analysis

| Class | Analysis Results | Pass/Fail |
|--------------------------|------------------|-----------|
| Carbamates | < LOQ of 0.1 ppm | Pass |
| Pyrethroids | < LOQ of 0.1 ppm | Pass |
| Organophosphates | < LOQ of 0.1 ppm | Pass |
| Chlorinated Hydrocarbons | < LOQ of 0.1 ppm | Pass |

Pesticide Analytes

| Analyte | Analysis Results | Pass/Fail |
|-------------------|------------------|-----------|
| Acephate | < LOQ of 0.1 ppm | Pass |
| Azinphos methyl | < LOQ of 0.1 ppm | Pass |
| Bifenthrin | < LOQ of 0.1 ppm | Pass |
| Captan | < LOQ of 0.1 ppm | Pass |
| Carbaryl | < LOQ of 0.1 ppm | Pass |
| Chlorpyrifos | < LOQ of 0.1 ppm | Pass |
| Coumaphos | < LOQ of 0.1 ppm | Pass |
| Cyprodinil | < LOQ of 0.1 ppm | Pass |
| Deltamethrin | < LOQ of 0.1 ppm | Pass |
| Diazinon | < LOQ of 0.1 ppm | Pass |
| Dichofluanid | < LOQ of 0.1 ppm | Pass |
| Dichlorvos | < LOQ of 0.1 ppm | Pass |
| Dimethoate | < LOQ of 0.1 ppm | Pass |
| Fenhexamid | < LOQ of 0.1 ppm | Pass |
| Fenpropathrin | < LOQ of 0.1 ppm | Pass |
| Fenthion | < LOQ of 0.1 ppm | Pass |
| Folpet | < LOQ of 0.1 ppm | Pass |
| Imazalil | < LOQ of 0.1 ppm | Pass |
| Iprodione | < LOQ of 0.1 ppm | Pass |
| Malathion | < LOQ of 0.1 ppm | Pass |
| Metalaxyl | < LOQ of 0.1 ppm | Pass |
| Methamidophos | < LOQ of 0.1 ppm | Pass |
| Methiocarb | < LOQ of 0.1 ppm | Pass |
| Mevinphos | < LOQ of 0.1 ppm | Pass |
| Myclobutanil | < LOQ of 0.1 ppm | Pass |
| Omethoate | < LOQ of 0.1 ppm | Pass |
| cis-Permethrin | < LOQ of 0.1 ppm | Pass |
| trans-Permethrin | < LOQ of 0.1 ppm | Pass |
| Phosalone | < LOQ of 0.1 ppm | Pass |
| Pirimiphos methyl | < LOQ of 0.1 ppm | Pass |
| Propargite | < LOQ of 0.1 ppm | Pass |
| Thiabendazole | < LOQ of 0.1 ppm | Pass |
| Vinclozolin | < LOQ of 0.1 ppm | Pass |

Quality Control Results

| Sample | Analysis Results | Pass/Fail |
|------------------------|------------------------------|-----------|
| Method Blank | No Analytes Detected | Pass |
| Quality Control Sample | 90-110% of Expected Recovery | Pass |

Date: 3/21/16

Tracking#: 34475

Batch: Peaches 'n Cream

Source: Sofresh Farm



Matrix: Flower

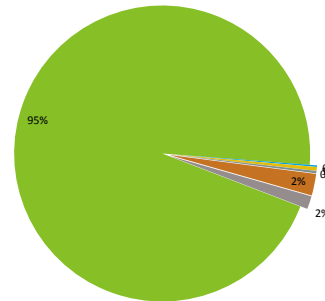
22.12 % THC

0.06 % CBD

by dehydrated weight

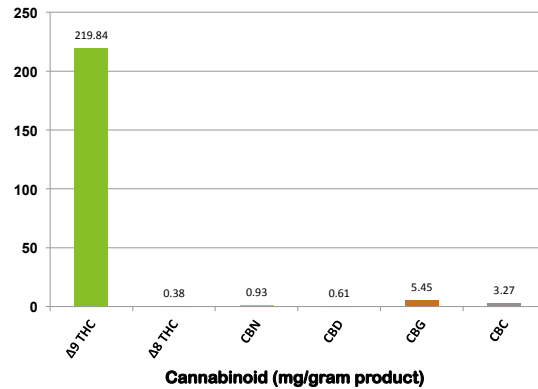
Ratio Of Cannabinoids (total 100%)

■ Δ9 THC ■ Δ8 THC ■ CBN ■ CBD ■ CBG ■ CBC



Cannabinoid Dosage Scale

■ Δ9 THC ■ Δ8 THC ■ CBN ■ CBD ■ CBG ■ CBC



Definitions:
LOQ=Limit of Quantitation

Megan Brock

Quality Assurance Manager/Lab Director