


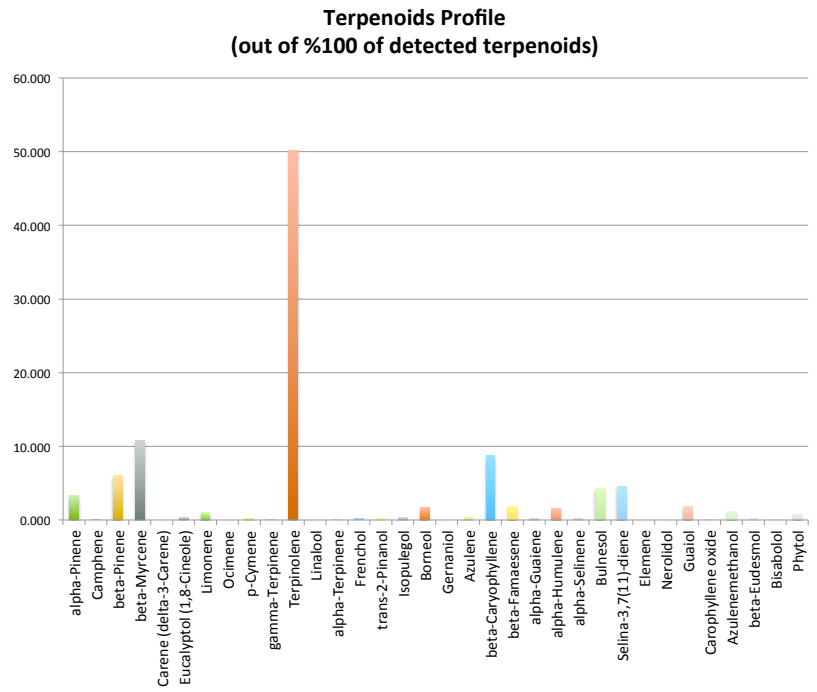


ANALYTICAL
oregon's leader in cannabis safety and analysis

**8700 SW 26th Ave Suite L
Portland, OR 97219
(503)954-3972
www.3BAnalytical.com
test@3BAnalytical.com**

Oregon Medical Marijuana Certificate of Analysis

Lab Report			Test Date: 11/2/15	Tracking#: 29708																
Analysis	Method	Instrument																		
Pesticide	GC/MS	Clarus 680/SQ8T																		
Potency	GC/FID	Clarus 680/SQ8T																		
Mold/Mildew (aerobic option)	Petrifilm Culture	N/A																		
Terpene	GC/FID	Clarus 680/SQ8T	<table border="1" style="width: 100%; border-collapse: collapse;"> <tr> <td colspan="2" style="text-align: center; padding: 5px;">Source: So Fresh</td> </tr> <tr> <td colspan="2" style="text-align: center; padding: 5px;">Matrix: Flower</td> </tr> <tr> <td colspan="2" style="text-align: center; padding: 5px;">3.68 %Terpenes</td> </tr> <tr> <td colspan="2" style="text-align: center; padding: 5px;"><small>detected by weight</small></td> </tr> <tr> <td colspan="2" style="text-align: center; padding: 5px;">Dominant Terpene(s)</td> </tr> <tr> <td style="text-align: center; padding: 5px;">1.85</td> <td style="padding: 5px;">% Terpinolene</td> </tr> <tr> <td style="text-align: center; padding: 5px;">0.40</td> <td style="padding: 5px;">% beta-Myrcene</td> </tr> <tr> <td colspan="2" style="text-align: center; padding: 5px;"><small>detected by weight</small></td> </tr> </table>		Source: So Fresh		Matrix: Flower		3.68 %Terpenes		<small>detected by weight</small>		Dominant Terpene(s)		1.85	% Terpinolene	0.40	% beta-Myrcene	<small>detected by weight</small>	
Source: So Fresh																				
Matrix: Flower																				
3.68 %Terpenes																				
<small>detected by weight</small>																				
Dominant Terpene(s)																				
1.85	% Terpinolene																			
0.40	% beta-Myrcene																			
<small>detected by weight</small>																				
Terpene Profile																				
Terpene	% by weight	% by total																		
alpha-Pinene	0.123	3.341																		
Camphene	0.001	0.027																		
beta-Pinene	0.221	6.002																		
beta-Myrcene	0.398	10.809																		
Carene (delta-3-Carene)	0.000	0.000																		
Eucalyptol (1,8-Cineole)	0.014	0.380																		
Limonene	0.038	1.032																		
Ocimene	0.000	0.000																		
p-Cymene	0.009	0.244																		
gamma-Terpinene	0.003	0.081																		
Terpinolene	1.848	50.190																		
Linalool	0.000	0.000																		
alpha-Terpinene	0.001	0.027																		
Frenchol	0.006	0.163																		
trans-2-Pinanol	0.005	0.136																		
Isopulegol	0.014	0.380																		
Borneol	0.061	1.657																		
Gernaniol	0.000	0.000																		
Azulene	0.010	0.272																		
beta-Caryophyllene	0.322	8.745																		
beta-Famaesene	0.069	1.874																		
alpha-Guaiene	0.009	0.244																		
alpha-Humulene	0.055	1.494																		
alpha-Selinene	0.009	0.244																		
Bulnesol	0.155	4.210																		
Selina-3,7(11)-diene	0.166	4.508																		
Elemene	0.000	0.000																		
Nerolidol	0.000	0.000																		
Guaiol	0.065	1.765																		
Carophyllene oxide	0.002	0.054																		
Azulenemethanol	0.044	1.195																		
beta-Eudesmol	0.006	0.163																		
Bisabolol	0.003	0.081																		
Phytol	0.025	0.679																		
Total	3.682	100.000																		



Comments:

Quality Assurance Manager/Lab Director