


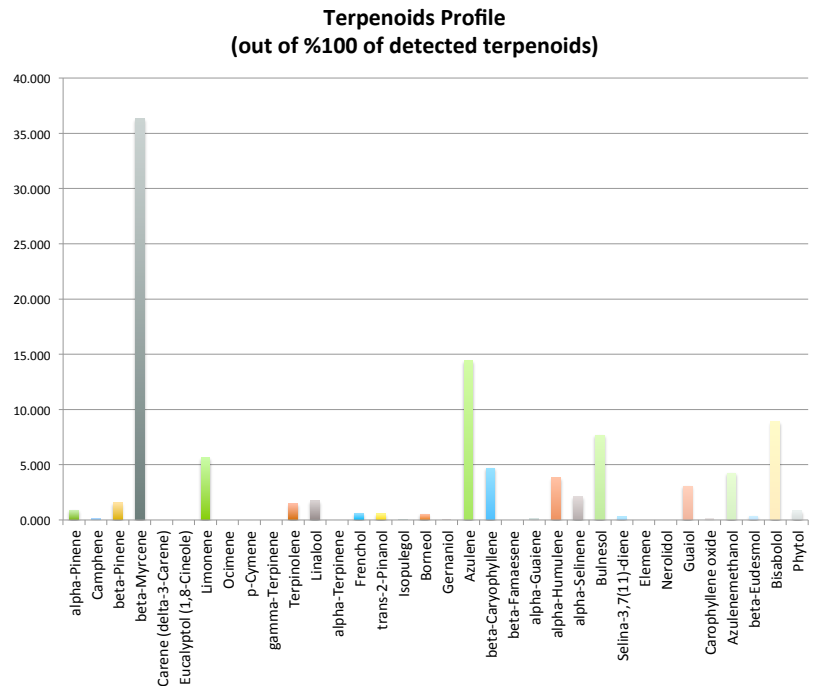


ANALYTICAL
oregon's leader in cannabis safety and analysis

**8700 SW 26th Ave Suite L
Portland, OR 97219
(503)954-3972
www.3BAnalytical.com
test@3BAnalytical.com**

Oregon Medical Marijuana Certificate of Analysis

Lab Report			Test Date: 11/2/15	Tracking#: 29709
Analysis	Method	Instrument		
Pesticide	GC/MS	Clarus 680/SQ8T		
Potency	GC/FID	Clarus 680/SQ8T		
Mold/Mildew (aerobic option)	Petrifilm Culture	N/A		
Terpene	GC/FID	Clarus 680/SQ8T	Source: So Fresh	
Terpene Profile			Matrix: Flower	
Terpene	% by weight	% by total	4.01 %Terpenes detected by weight	
alpha-Pinene	0.036	0.898	Dominant Terpene(s)	
Camphene	0.004	0.100		
beta-Pinene	0.062	1.547	1.46 % beta-Myrcene	
beta-Myrcene	1.457	36.343	0.58 % Azulene detected by weight	
Carene (delta-3-Carene)	0.000	0.000		
Eucalyptol (1,8-Cineole)	0.000	0.000		
Limonene	0.225	5.612		
Ocimene	0.000	0.000		
p-Cymene	0.000	0.000		
gamma-Terpinene	0.000	0.000		
Terpinolene	0.060	1.497		
Linalool	0.070	1.746		
alpha-Terpinene	0.000	0.000		
Frenchol	0.024	0.599		
trans-2-Pinanol	0.022	0.549		
Isopulegol	0.001	0.025		
Borneol	0.021	0.524		
Gernaniol	0.001	0.025		
Azulene	0.577	14.393		
beta-Caryophyllene	0.188	4.689		
beta-Famaesene	0.000	0.000		
alpha-Guaiene	0.004	0.100		
alpha-Humulene	0.153	3.816		
alpha-Selinene	0.086	2.145		
Bulnesol	0.307	7.658		
Selina-3,7(11)-diene	0.011	0.274		
Elemene	0.000	0.000		
Nerolidol	0.000	0.000		
Guaiol	0.123	3.068		
Carophyllene oxide	0.004	0.100		
Azulenemethanol	0.169	4.216		
beta-Eudesmol	0.014	0.349		
Bisabolol	0.357	8.905		
Phytol	0.033	0.823		
Total	4.009	100.000		



Comments:

Quality Assurance Manager/Lab Director