


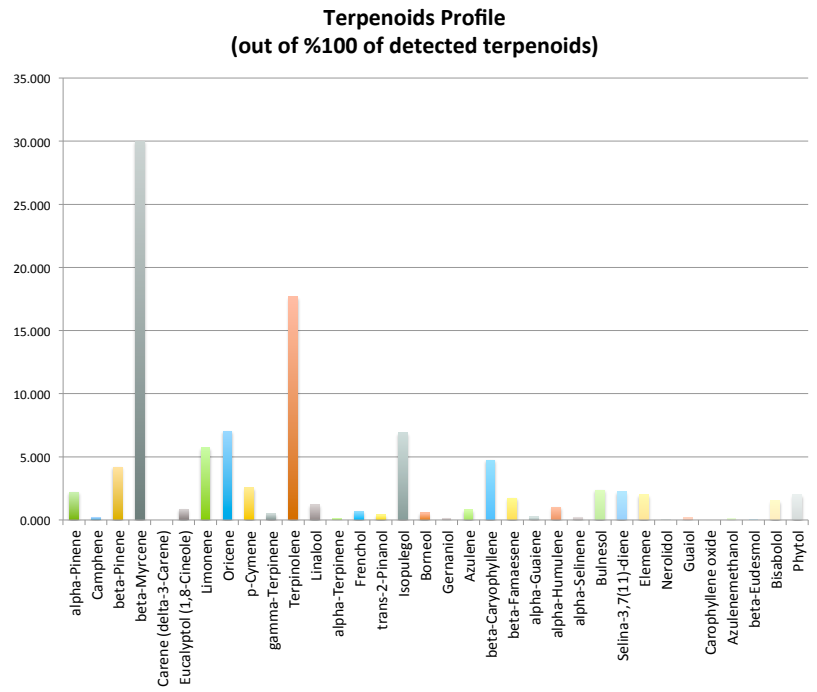


ANALYTICAL
oregon's leader in cannabis safety and analysis

**8700 SW 26th Ave Suite L
Portland, OR 97219
(503)954-3972
www.3BAnalytical.com
test@3BAnalytical.com**

Oregon Medical Marijuana Certificate of Analysis

Lab Report			Test Date: 8/1/15	Tracking#: 24905
Analysis	Method	Instrument	Batch: Sweet Tooth	Source: Oregon's Finest - So Fresh
Pesticide	GC/MS	Clarius 680/SQ8T		Matrix: Flower
Potency	GC/FID	Clarius 680/SQ8T		3.78 %Terpenes
Mold/Mildew (aerobic option)	Petrifilm	Culture N/A		detected by weight
Terpene	GC/FID	Clarius 680/SQ8T		Dominant Terpene(s)
Terpene Profile				
Terpene	% by weight	% by total		
alpha-Pinene	0.083	2.195		
Camphene	0.008	0.212		
beta-Pinene	0.158	4.179		
beta-Myrcene	1.134	29.992		
Carene (delta-3-Carene)	0.000	0.000		
Eucalyptol (1,8-Cineole)	0.032	0.846		
Limonene	0.217	5.739		
Oricene	0.266	7.035		
p-Cymene	0.096	2.539		
gamma-Terpinene	0.019	0.503		
Terpinolene	0.668	17.667		
Linalool	0.046	1.217		
alpha-Terpinene	0.004	0.106		
Frenchol	0.026	0.688		
trans-2-Pinanol	0.015	0.397		
Isopulegol	0.261	6.903		
Borneol	0.021	0.555		
Gernaniol	0.005	0.132		
Azulene	0.030	0.793		
beta-Caryophyllene	0.179	4.734		
beta-Famaesene	0.065	1.719		
alpha-Guaiene	0.009	0.238		
alpha-Humulene	0.038	1.005		
alpha-Selinene	0.008	0.212		
Bulnesol	0.089	2.354		
Selina-3,7(11)-diene	0.084	2.222		
Elemene	0.076	2.010		
Nerolidol	0.001	0.026		
Guaiol	0.006	0.159		
Carophyllene oxide	0.000	0.000		
Azulenemethanol	0.004	0.106		
beta-Eudesmol	0.001	0.026		
Bisabolol	0.057	1.508		
Phytol	0.075	1.984		
Total	3.781	100.000		



Comments:

James Koster
Quality Assurance Manager/Lab Director