


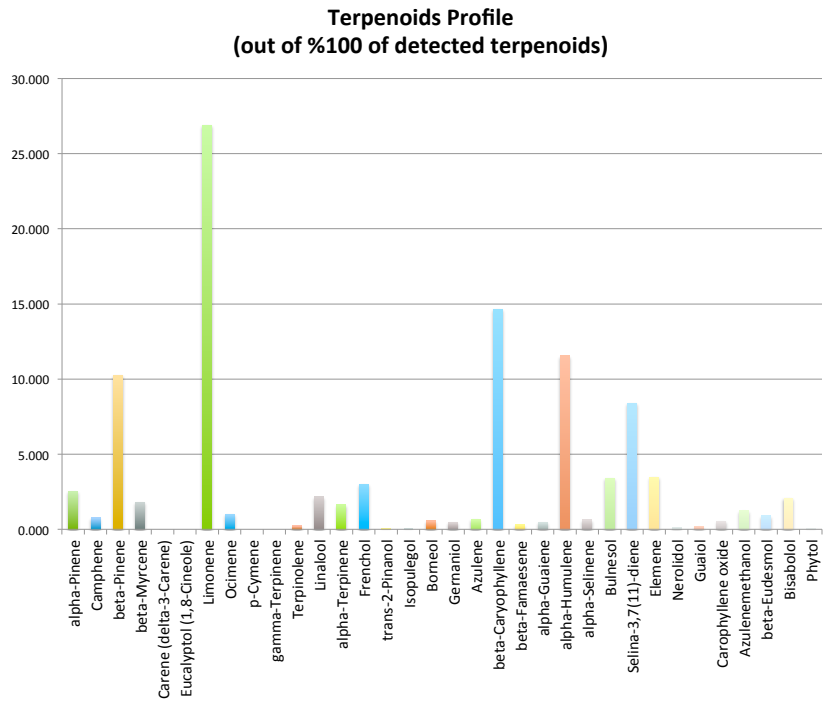


A⁺ANALYTICAL
oregon's leader in cannabis safety and analysis

8700 SW 26th Ave Suite L
Portland, OR 97219
(503)954-3972
www.3BAnalytical.com
test@3BAnalytical.com

Oregon Medical Marijuana Certificate of Analysis

Lab Report			Test Date: 3/16/16	Tracking#: 34220		
Analysis	Method	Instrument		4.12 % Terpenes <small>detected by weight</small>		
Pesticide	GC/MS	Clarus 680/SQ8T			Batch: Kimbo Kush	Source: Sofresh Farms
Potency	GC/FID	Clarus 680/SQ8T			Matrix: Flower	
Mold/Mildew	Petrifilm	N/A			1.11 % Limonene	
Terpene	GC/FID	Clarus 680			0.60 % beta-Caryophyllene <small>detected by weight</small>	
Terpene Profile						
Terpene	% by weight	% by total				
alpha-Pinene	0.104	2.523				
Camphene	0.032	0.776				
beta-Pinene	0.423	10.262				
beta-Myrcene	0.074	1.795				
Carene (delta-3-Carene)	0.000	0.000				
Eucalyptol (1,8-Cineole)	0.000	0.000				
Limonene	1.109	26.904				
Ocimene	0.041	0.995				
p-Cymene	0.000	0.000				
gamma-Terpinene	0.000	0.000				
Terpinolene	0.010	0.243				
Linalool	0.090	2.183				
alpha-Terpinene	0.068	1.650				
Fenchol	0.124	3.008				
trans-2-Pinanol	0.001	0.024				
Isopulegol	0.001	0.024				
Borneol	0.023	0.558				
Gernaniol	0.019	0.461				
Azulene	0.027	0.655				
beta-Caryophyllene	0.604	14.653				
beta-Famaesene	0.013	0.315				
alpha-Guaiene	0.019	0.461				
alpha-Humulene	0.476	11.548				
alpha-Selinene	0.026	0.631				
Bulnesol	0.140	3.396				
Selina-3,7(11)-diene	0.346	8.394				
Elemene	0.143	3.469				
Nerolidol	0.004	0.097				
Guaiol	0.008	0.194				
Carophyllene oxide	0.022	0.534				
Azulenemethanol	0.052	1.262				
beta-Eudesmol	0.037	0.898				
Bisabolol	0.085	2.062				
Phytol	0.001	0.024				
Total	4.122	100.000				



Comments:

Megan Brook

Quality Assurance Manager/Lab Director