

12025 NE Marx St. Portland, OR 97220
503-253-3511 / www.greenleaflab.org

Green Leaf Lab proudly follows
ISO/IEC 17025:2005(E) Quality Standards

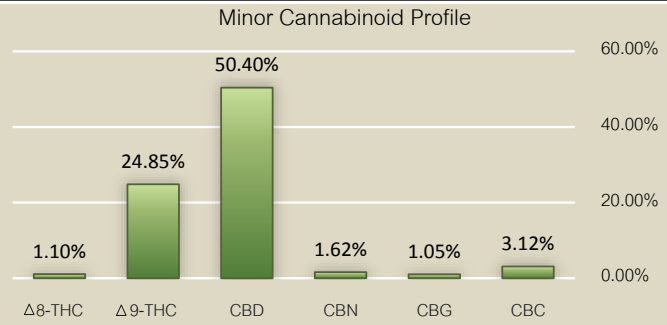
Raw Cannatonic RSO #1

C3 Gardens

Sample ID	S109975	Batch Weight/Qty:	€66 g	Analysis Methods	Potency via GC-MS / GC-FID	Instruments	HP 5890 / HP 5972
Date Accepted:	12/8/2014	Date Analyzed:	12/13/2014	Pesticide via GC-MS / ELISA		Analysts	
Sampling Method	Batch Tested			Mold & Mildew via 3M RYM Petrifilm		LMG / TCE	

Potency Analysis

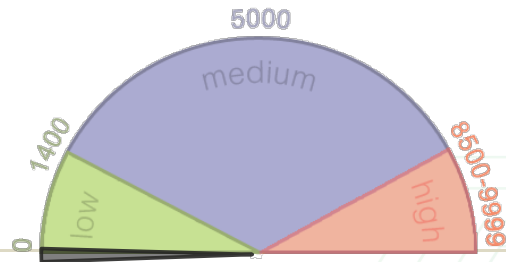
Cannabinoids (% weight)		Moisture Adjusted
Total THC (Δ8+Δ9)	25.95	25.95
Δ 8-THC	1.10	1.10
Δ 9-THC	24.85	24.85
CBD	50.40	50.40
CBN	1.62	1.62
CBG	1.05	1.05
CBC	3.12	3.12
Total Cannabinoids	82.14	0.00% Moisture



Mold and Mildew Screen

Total Colonies	0	CFU/g
----------------	---	-------

This color coded guage represents the sample's colony forming units per gram (CFU/g) and how it compares to flowers tested at Green Leaf Lab. This is **not** a doctor's recommendation and is only a tool for helping compare your sample to CFU/g values observed in the lab. The larger size of the medium range indicates that the majority of samples fall within the 1400-8500 range. A CFU/g of 10,000 or above does not comply with Oregon State law.



Pesticide Analysis

Pyrethrins	Not Detected	ppm
Organophosphates	Not Detected	ppm
Carbamates	Not Detected	ppm
Chlorinated Hydrocarbons	Not Detected	ppm
Total Pesticide Content	ND @ 0.1	ppm

Definitions

ND: not detected
NT: not tested
ppm: parts per million,
CFU/g: colony forming units per gram



Scan this QR code for more information about your lab report.

Rowshan Reordan

Managing Partner, Laboratory Official

Test results only valid for samples collected

Reports shall not be repeated except in full

12025 NE Marx St. Portland, OR 97220
 503-253-3511 / www.greenleaflab.org

 Green Leaf Lab proudly follows
 ISO/IEC 17025:2005(E) Quality Standards

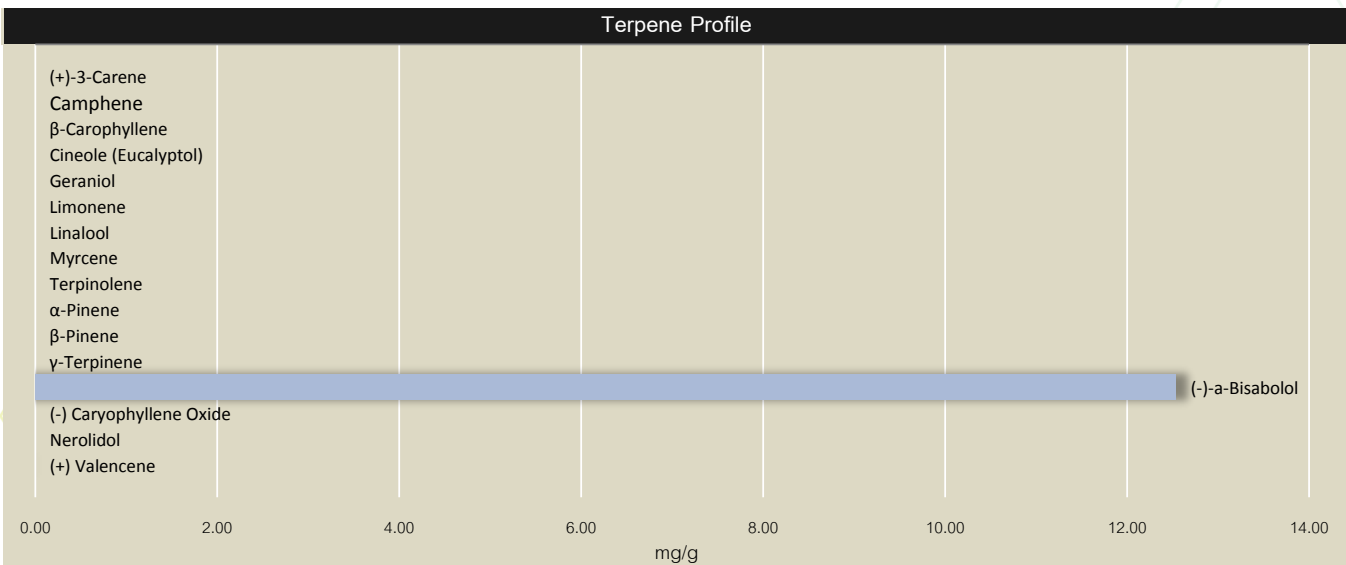
Raw Cannatonic RSO #1

C3 Gardens

 Sample ID: S109975 Batch Weight/Qty: 66 g
 Date Accepted: 12/8/2014 Date Analyzed: 12/13/2014
 Sampling Method: Batch Tested

 Analysis Methods: Terpenes via GC-MS
 Residual Solvents via GC-MS
 Instruments: HP 5890 / HP 5972
 Analysts: LMG / TCE

Terpene Analysis			Residual Solvent Analysis		
Monoterpenes			Class 1		
(+)-3-Carene	Not Detected	mg/g	Benzene	Not Detected	ppm
Camphene	Not Detected	mg/g	Carbon Tetrachloride	Not Detected	ppm
β-Carophyllene	Not Detected	mg/g	Class 2		
Cineole (Eucalyptol)	Not Detected	mg/g	Chloroform	Not Detected	ppm
Geraniol	Not Detected	mg/g	Ethyl Benzene	Not Detected	ppm
Limonene	Not Detected	mg/g	Hexane	Not Detected	ppm
Linalool	Not Detected	mg/g	Methylene Chloride	Not Detected	ppm
Myrcene	Not Detected	mg/g	Toluene	Not Detected	ppm
Terpinolene	Not Detected	mg/g	Xylene	Not Detected	ppm
α-Pinene	Not Detected	mg/g	Class 3		
β-Pinene	Not Detected	mg/g	Acetone	Not Detected	ppm
γ-Terpinene	Not Detected	mg/g	Ethanol	Not Detected	ppm
Sesquiterpenes			Heptane	Not Detected	ppm
(-)-a-Bisabolol	12.54	mg/g	Isopropyl Alcohol	Not Detected	ppm
(-) Caryophyllene Oxide	Not Detected	mg/g	Pentane	Not Detected	ppm
Nerolidol	Not Detected	mg/g	Unclassified		
(+) Valencene	Not Detected	mg/g	Butane	Not Detected	ppm
Total Terpene Content:	ND @ 0.01	mg/g	Total Solvent Content:	NT	ppm




12025 NE Marx St. Portland, OR 97220
503-253-3511 / www.greenleaflab.org

Green Leaf Lab proudly follows
ISO/IEC 17025:2005(E) Quality Standards

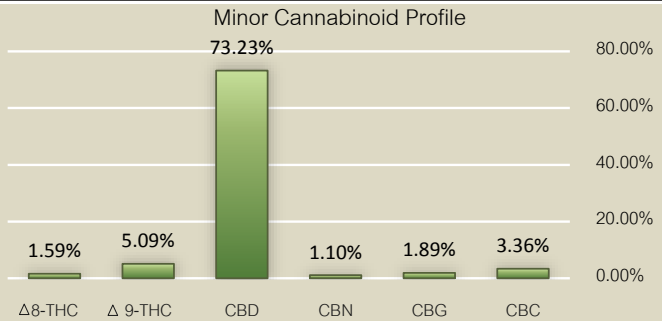
Harley-Tsu RSO #1

C3 Gardens

Sample ID	S109962	Batch Weight/Qty:	32 g	Analysis Methods	Potency via GC-MS / GC-FID	Instruments	HP 5890 / HP 5972
Date Accepted:	12/8/2014	Date Analyzed:	12/13/2014	Pesticide via GC-MS / ELISA		Analysts	
Sampling Method	Batch tested			Mold & Mildew via 3M RYM Petrifilm		LMG / TCE	

Potency Analysis

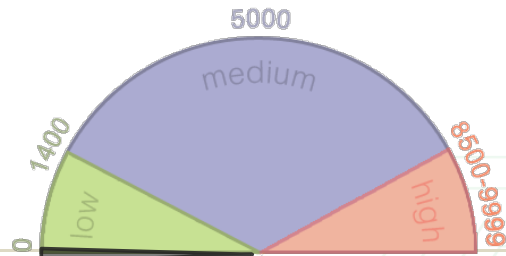
Cannabinoids (% weight)		Moisture Adjusted
Total THC ($\Delta 8 + \Delta 9$)	6.68	6.68
$\Delta 8$ -THC	1.59	1.59
$\Delta 9$ -THC	5.09	5.09
CBD	73.23	73.23
CBN	1.10	1.10
CBG	1.89	1.89
CBC	3.36	3.36
Total Cannabinoids	86.26	0.00% Moisture



Mold and Mildew Screen

Total Colonies	0	CFU/g
----------------	---	-------

This color coded gauge represents the sample's colony forming units per gram (CFU/g) and how it compares to flowers tested at Green Leaf Lab. This is **not** a doctor's recommendation and is only a tool for helping compare your sample to CFU/g values observed in the lab. The larger size of the medium range indicates that the majority of samples fall within the 1400-8500 range. A CFU/g of 10,000 or above does not comply with Oregon State law.



Pesticide Analysis

Pyrethrins	Not Detected	ppm
Organophosphates	Not Detected	ppm
Carbamates	Not Detected	ppm
Chlorinated Hydrocarbons	Not Detected	ppm
Total Pesticide Content	ND @ 0.1	ppm

Definitions

ND: not detected
NT: not tested
ppm: parts per million,
CFU/g: colony forming units per gram



Scan this QR code for more information about your lab report.



Rowshan Reordan

Managing Partner, Laboratory Official

Test results only valid for samples collected

Reports shall not be repeated except in full

12025 NE Marx St. Portland, OR 97220
503-253-3511 / www.greenleaflab.org

Green Leaf Lab proudly follows
ISO/IEC 17025:2005(E) Quality Standards

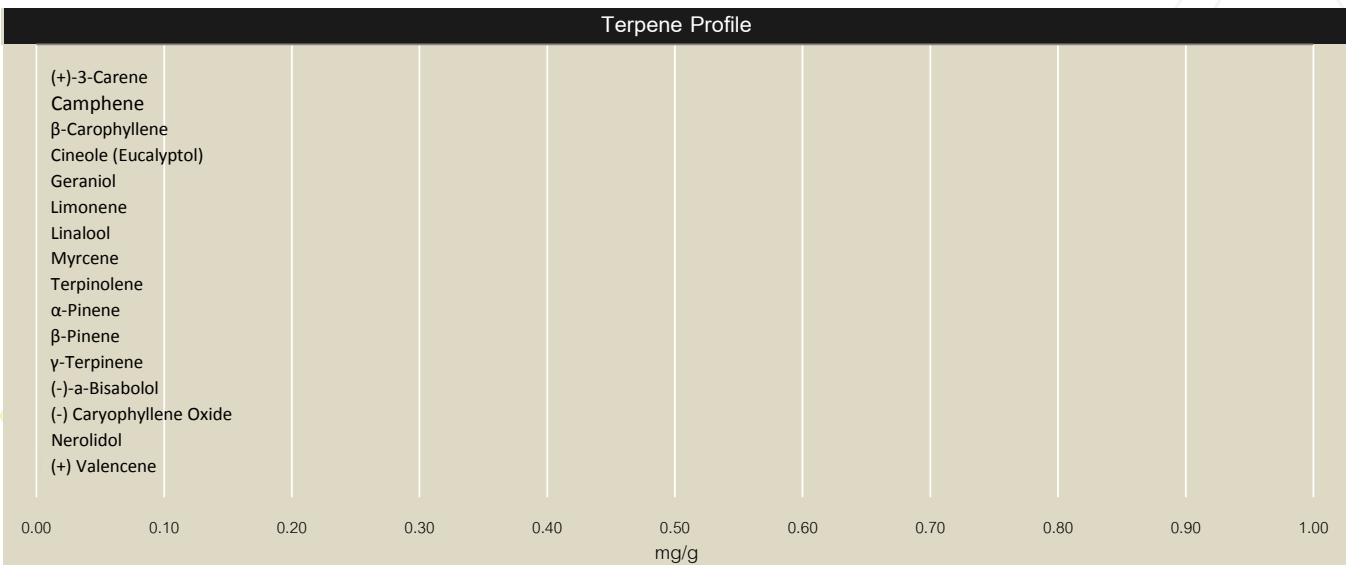
Harley-Tsu RSO #1

C3 Gardens

Sample ID: S109962 Batch Weight/Qty: 32 g
Date Accepted: 12/8/2014 Date Analyzed: 12/13/2014
Sampling Method: Batch tested

Analysis Methods: Terpenes via GC-MS, Residual Solvents via GC-MS
Instruments: HP 5890 / HP 5972
Analysts: LMG / TCE

Terpene Analysis			Residual Solvent Analysis		
Monoterpenes			Class 1		
(+)-3-Carene	Not Detected	mg/g	Benzene	Not Detected	ppm
Camphene	Not Detected	mg/g	Carbon Tetrachloride	Not Detected	ppm
β-Carophyllene	Not Detected	mg/g	Class 2		
Cineole (Eucalyptol)	Not Detected	mg/g	Chloroform	Not Detected	ppm
Geraniol	Not Detected	mg/g	Ethyl Benzene	Not Detected	ppm
Limonene	Not Detected	mg/g	Hexane	Not Detected	ppm
Linalool	Not Detected	mg/g	Methylene Chloride	Not Detected	ppm
Myrcene	Not Detected	mg/g	Toluene	Not Detected	ppm
Terpinolene	Not Detected	mg/g	Xylene	Not Detected	ppm
α-Pinene	Not Detected	mg/g	Class 3		
β-Pinene	Not Detected	mg/g	Acetone	Not Detected	ppm
γ-Terpinene	Not Detected	mg/g	Ethanol	Not Detected	ppm
Sesquiterpenes			Heptane	Not Detected	ppm
(-)-a-Bisabolol	Not Detected	mg/g	Isopropyl Alcohol	Not Detected	ppm
(-) Caryophyllene Oxide	Not Detected	mg/g	Pentane	Not Detected	ppm
Nerolidol	Not Detected	mg/g	Unclassified		
(+) Valencene	Not Detected	mg/g	Butane	Not Detected	ppm
Total Terpene Content:	ND @ 0.01	mg/g	Total Solvent Content:	ND @ 1	ppm




12025 NE Marx St. Portland, OR 97220
503-253-3511 / www.greenleaflab.org

Green Leaf Lab proudly follows
ISO/IEC 17025:2005(E) Quality Standards

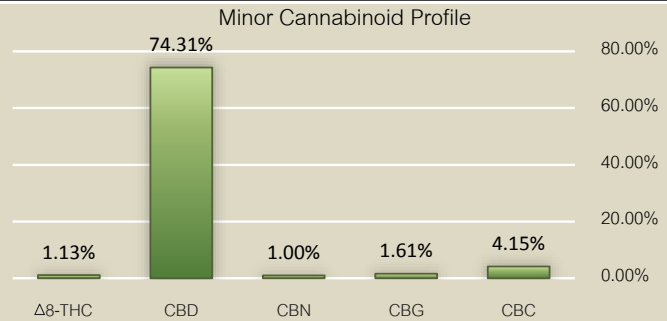
ACDC RSO #1

C3 Gardens

Sample ID	S109971	Batch Weight/Qty:	32 g	Analysis Methods	Potency via GC-MS / GC-FID	Instruments	HP 5890 / HP 5972
Date Accepted:	12/8/2014	Date Analyzed:	12/13/2014	Pesticide via GC-MS / ELISA		Analysts	
Sampling Method	Batch Tested			Mold & Mildew via 3M RYM Petrifilm		LMG / TCE	

Potency Analysis

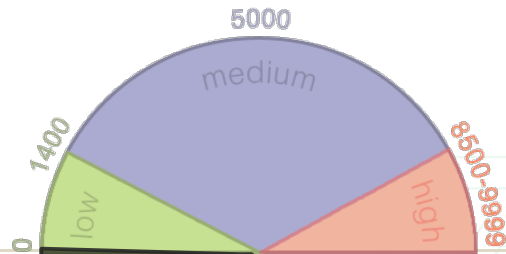
Cannabinoids (% weight)		Moisture Adjusted
Total THC ($\Delta 8 + \Delta 9$)	7.06	7.06
$\Delta 8$ -THC	1.13	1.13
$\Delta 9$ -THC	5.93	5.93
CBD	74.31	74.31
CBN	1.00	1.00
CBG	1.61	1.61
CBC	4.15	4.15
Total Cannabinoids	88.13	0.00% Moisture



Mold and Mildew Screen

Total Colonies	0	CFU/g
----------------	---	-------

This color coded gauge represents the sample's colony forming units per gram (CFU/g) and how it compares to flowers tested at Green Leaf Lab. This is **not** a doctor's recommendation and is only a tool for helping compare your sample to CFU/g values observed in the lab. The larger size of the medium range indicates that the majority of samples fall within the 1400-8500 range. A CFU/g of 10,000 or above does not comply with Oregon State law.



Pesticide Analysis

Pyrethrins	Not Detected	ppm
Organophosphates	Not Detected	ppm
Carbamates	Not Detected	ppm
Chlorinated Hydrocarbons	Not Detected	ppm
Total Pesticide Content	ND @ 0.1	ppm

Definitions

ND: not detected
NT: not tested
ppm: parts per million,
CFU/g: colony forming units per gram



Scan this QR code for more information about your lab report.



Rowshan Reordan
Managing Partner, Laboratory Official

12025 NE Marx St. Portland, OR 97220
503-253-3511 / www.greenleaflab.org

Green Leaf Lab proudly follows
ISO/IEC 17025:2005(E) Quality Standards

ACDC RSO #1

C3 Gardens

Sample ID S109971 Batch Weight/Qty: 32 g
Date Accepted: 12/8/2014 Date Analyzed: 12/13/2014
Sampling Method: Batch Tested

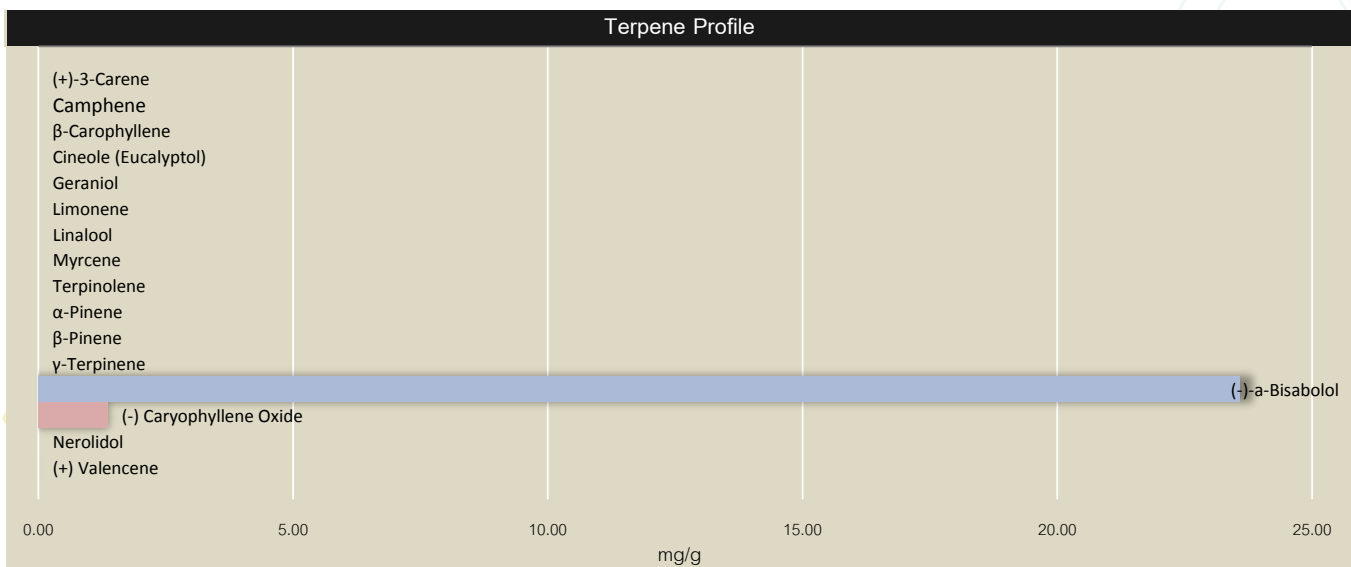
Analysis Methods

Terpenes via GC-MS
Residual Solvents via GC-MS

Instruments

HP 5890 / HP 5972
Analysts
LMG / TCE

Terpene Analysis			Residual Solvent Analysis		
Monoterpenes			Class 1		
(+)-3-Carene	Not Detected	mg/g	Benzene	Not Detected	ppm
Camphene	Not Detected	mg/g	Carbon Tetrachloride	Not Detected	ppm
β-Carophyllene	Not Detected	mg/g	Class 2		
Cineole (Eucalyptol)	Not Detected	mg/g	Chloroform	Not Detected	ppm
Geraniol	Not Detected	mg/g	Ethyl Benzene	Not Detected	ppm
Limonene	Not Detected	mg/g	Hexane	Not Detected	ppm
Linalool	Not Detected	mg/g	Methylene Chloride	Not Detected	ppm
Myrcene	Not Detected	mg/g	Toluene	Not Detected	ppm
Terpinolene	Not Detected	mg/g	Xylene	Not Detected	ppm
α-Pinene	Not Detected	mg/g	Class 3		
β-Pinene	Not Detected	mg/g	Acetone	Not Detected	ppm
γ-Terpinene	Not Detected	mg/g	Ethanol	Not Detected	ppm
Sesquiterpenes			Heptane	Not Detected	ppm
(-)-a-Bisabolol	23.58	mg/g	Isopropyl Alcohol	Not Detected	ppm
(-) Caryophyllene Oxide	1.356	mg/g	Pentane	Not Detected	ppm
Nerolidol	Not Detected	mg/g	Unclassified		
(+) Valencene	Not Detected	mg/g	Butane	Not Detected	ppm
Total Terpene Content:	ND @ 0.01	mg/g	Total Solvent Content:	ND @ 1	ppm




Rowshan Reordan

Managing Partner, Laboratory Official

Test results only valid for samples collected

Reports shall not be repeated except in full

12025 NE Marx St. Portland, OR 97220
503-253-3511 / www.greenleaflab.org

Green Leaf Lab proudly follows
ISO/IEC 17025:2005(E) Quality Standards

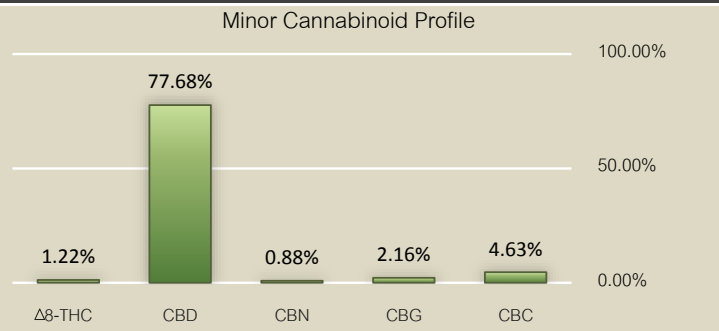
ACDC RSO #2

C3 Gardens

Sample ID	S109959	Batch Weight/Qty:	54 g	Analysis Methods	Potency via GC-MS / GC-FID	Instruments	HP 5890 / HP 5972
Date Accepted:	12/8/2014	Date Analyzed:	12/13/2014	Pesticide via GC-MS / ELISA		Analysts	
Sampling Method	Batch Tested			Mold & Mildew via 3M RYM Petrifilm		LMG / TCE	

Potency Analysis

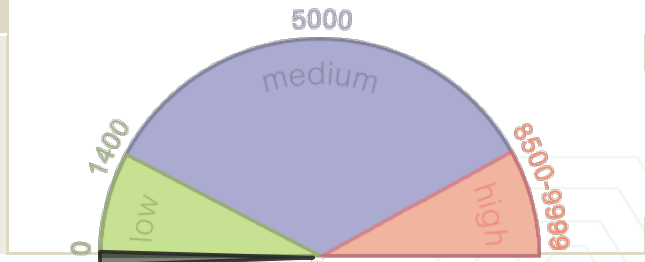
Cannabinoids (% weight)		Moisture Adjusted
Total THC ($\Delta 8 + \Delta 9$)	6.64	6.64
$\Delta 8$ -THC	1.22	1.22
$\Delta 9$ -THC	5.42	5.42
CBD	77.68	77.68
CBN	0.88	0.88
CBG	2.16	2.16
CBC	4.63	4.63
Total Cannabinoids	91.99	0.00% Moisture



Mold and Mildew Screen

Total Colonies	0	CFU/g
----------------	---	-------

This color coded gauge represents the sample's colony forming units per gram (CFU/g) and how it compares to flowers tested at Green Leaf Lab. This is **not** a doctor's recommendation and is only a tool for helping compare your sample to CFU/g values observed in the lab. The larger size of the medium range indicates that the majority of samples fall within the 1400-8500 range. A CFU/g of 10,000 or above does not comply with Oregon State law.



Pesticide Analysis

Pyrethrins	Not Detected	ppm
Organophosphates	Not Detected	ppm
Carbamates	Not Detected	ppm
Chlorinated Hydrocarbons	Not Detected	ppm
Total Pesticide Content	ND @ 0.1	ppm

Definitions

ND: not detected
NT: not tested
ppm: parts per million,
CFU/g: colony forming units per gram



Scan this QR code for more information about your lab report.



Rowshan Reordan
Managing Partner, Laboratory Official

12025 NE Marx St. Portland, OR 97220
503-253-3511 / www.greenleafflab.org

Green Leaf Lab proudly follows
ISO/IEC 17025:2005(E) Quality Standards

Blue City Diesel, flower

C3 Gardens

Sample ID S109950 Batch Weight/Qty:

Date Accepted: 12/8/2014 Date Analyzed: 12/13/2014

Sampling Method Client Sampled Batch

Testing in compliance with Oregon State Law and OAR 333-0081190

Analysis Methods

Potency via GC-MS / GC-FID

Pesticide via GC-MS / ELISA

Mold & Mildew via 3M RYM Petrifilm

Instruments

HP 5890 / HP 5972

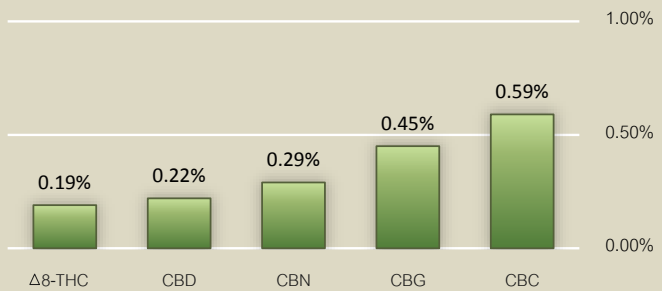
Analysts

LMG / TCE

Potency Analysis

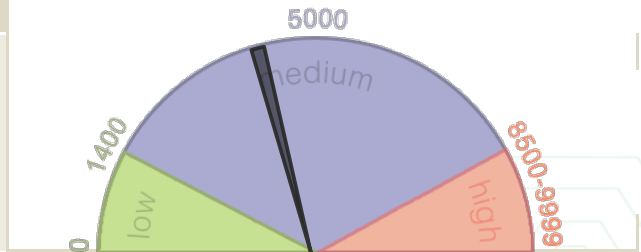
Cannabinoids (% weight)		Moisture Adjusted
Total THC ($\Delta 8 + \Delta 9$)	18.03	18.73
$\Delta 8$ -THC	0.19	0.20
$\Delta 9$ -THC	17.84	18.53
CBD	0.22	0.23
CBN	0.29	0.30
CBG	0.45	0.47
CBC	0.59	0.61
Total Cannabinoids	19.58	3.87% Moisture

Minor Cannabinoid Profile



Mold and Mildew Screen

Total Colonies	4,200	CFU/g
<p>This color coded gauge represents the sample's colony forming units per gram (CFU/g) and how it compares to flowers tested at Green Leaf Lab. This is not a doctor's recommendation and is only a tool for helping compare your sample to CFU/g values observed in the lab. The larger size of the medium range indicates that the majority of samples fall within the 1400-8500 range. A CFU/g of 10,000 or above does not comply with Oregon State law.</p>		



Pesticide Analysis

Pyrethrins	Not Detected	ppm
Organophosphates	Not Detected	ppm
Carbamates	Not Detected	ppm
Chlorinated Hydrocarbons	Not Detected	ppm
Total Pesticide Content	ND @ 0.1	ppm

Definitions

ND: not detected

NT: not tested

ppm: parts per million,

CFU/g: colony forming units per gram



Scan this QR code for more information about your lab report.



Rowshan Reordan

Managing Partner, Laboratory Official

Test results only valid for samples collected

Reports shall not be repeated except in full

12025 NE Marx St. Portland, OR 97220
503-253-3511 / www.greenleaflab.org

Green Leaf Lab proudly follows
ISO/IEC 17025:2005(E) Quality Standards

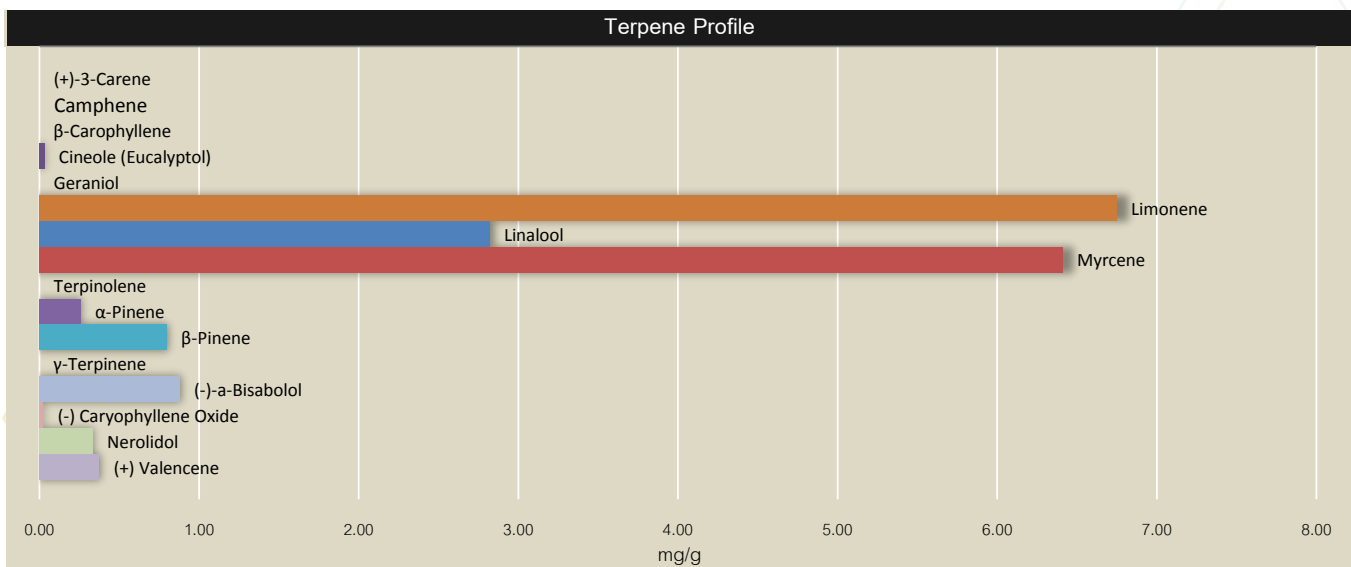
Blue City Diesel, flower

C3 Gardens

Sample ID S109950 Batch Weight/Qty:
Date Accepted: 12/8/2014 Date Analyzed: 12/13/2014
Sampling Method: Client Sampled Batch

Analysis Methods Instruments
Terpenes via GC-MS HP 5890 / HP 5972
Residual Solvents via GC-MS Analysts
LMG / TCE

Terpene Analysis			Residual Solvent Analysis		
Monoterpenes			Class 1		
(+)-3-Carene	Not Detected	mg/g	Benzene	Not Tested	ppm
Camphene	Not Detected	mg/g	Carbon Tetrachloride	Not Tested	ppm
β-Carophyllene	Not Detected	mg/g	Class 2		
Cineole (Eucalyptol)	0.032	mg/g	Chloroform	Not Tested	ppm
Geraniol	Not Detected	mg/g	Ethyl Benzene	Not Tested	ppm
Limonene	6.75	mg/g	Hexane	Not Tested	ppm
Linalool	2.82	mg/g	Methylene Chloride	Not Tested	ppm
Myrcene	6.41	mg/g	Toluene	Not Tested	ppm
Terpinolene	Not Detected	mg/g	Xylene	Not Tested	ppm
α-Pinene	0.259	mg/g	Class 3		
β-Pinene	0.799	mg/g	Acetone	Not Tested	ppm
γ-Terpinene	Not Detected	mg/g	Ethanol	Not Tested	ppm
Sesquiterpenes			Heptane	Not Tested	ppm
(-)-a-Bisabolol	0.879	mg/g	Isopropyl Alcohol	Not Tested	ppm
(-) Caryophyllene Oxide	0.024	mg/g	Pentane	Not Tested	ppm
Nerolidol	0.334	mg/g	Unclassified		
(+) Valencene	0.375	mg/g	Butane	Not Tested	ppm
Total Terpene Content:	ND @ 0.01	mg/g	Total Solvent Content:	NT	ppm




Rowshan Reordan

Managing Partner, Laboratory Official

Test results only valid for samples collected

Reports shall not be repeated except in full