

# Report: COA Evaluation Summary

OLCC License No. 10087092BDA | ORELAP ID. 4147

545 SW 2nd Street, Corvallis OR. 97333 | 541.257.5002 | services@preelab.com | Preelab.com

For OLCC/OHA Compliance Purposes.

## Product Description

Client: **SoFresh Farms**

Product Name: **Bruce Banner**

Harvest Lot: RHR1 BRB 2/17/20

Matrix: Cannabis Plant

Metric Source ID: 1A4010300001E17000006785

Metric Package ID: 1A4010300001E17000006783

License Number: 020-100010499D8

Report ID: A1525-05

Date Collected: 2020-05-06

Date Received: 2020-05-06

Report Date: 2020-05-11

Tests Requested: Water Activity  
Moisture Analysis  
Cannabinoid Potency Analysis  
Pesticide Analysis  
Terpene Analysis

## Bruce Banner

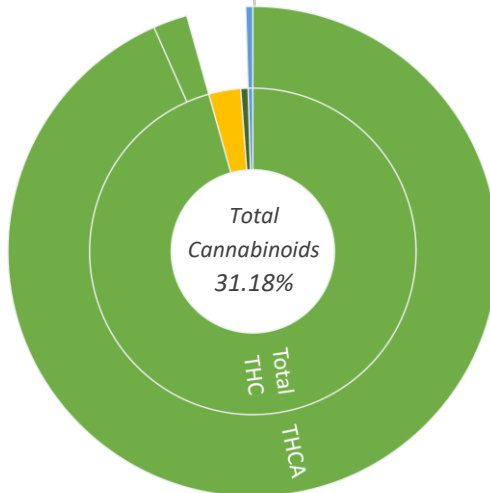


## Evaluation Summary

Water Activity	Tested Value (aw)	Pass Criteria (aw)
<b>Pass</b>	<b>0.484 aw</b>	< 0.65 aw

Moisture Analysis	Tested Value (%)	Pass Criteria (%)
<b>Pass</b>	<b>5.93 %</b>	< 15.0 %

Cannabinoid Potency Analysis		Abbr.	Dry Wt. %	Dry Wt. mg/g	
<b>Total THC *</b>	<b>26.24 %</b>	<b>262.4 mg/g</b>	THCA	29.12 %	291.2 mg/g
			Δ-9-THC	0.71 %	7.1 mg/g
<b>Total CBD *</b>	<b>0.13 %</b>	<b>1.3 mg/g</b>	Δ-8-THC	< LOQ	< LOQ
			THCV	< LOQ	< LOQ
			CBDA	0.15 %	1.5 mg/g
			CBD	< LOQ	< LOQ
			CBGA	0.99 %	9.9 mg/g
			CBG	0.23 %	2.3 mg/g
			CBDVA	< LOQ	< LOQ
			CBDV	< LOQ	< LOQ
			CBN	< LOQ	< LOQ
			CBL	< LOQ	< LOQ
			CBC	< LOQ	< LOQ



Pesticide Analysis	Pesticide Status
<b>Pass</b>	No Pesticides Were Detected above Oregon's action limit as stated in OAR 333-007-0400.

\* moisture compensated & adjusted for the loss of carboxylic acid group - OAR 333-064-0100

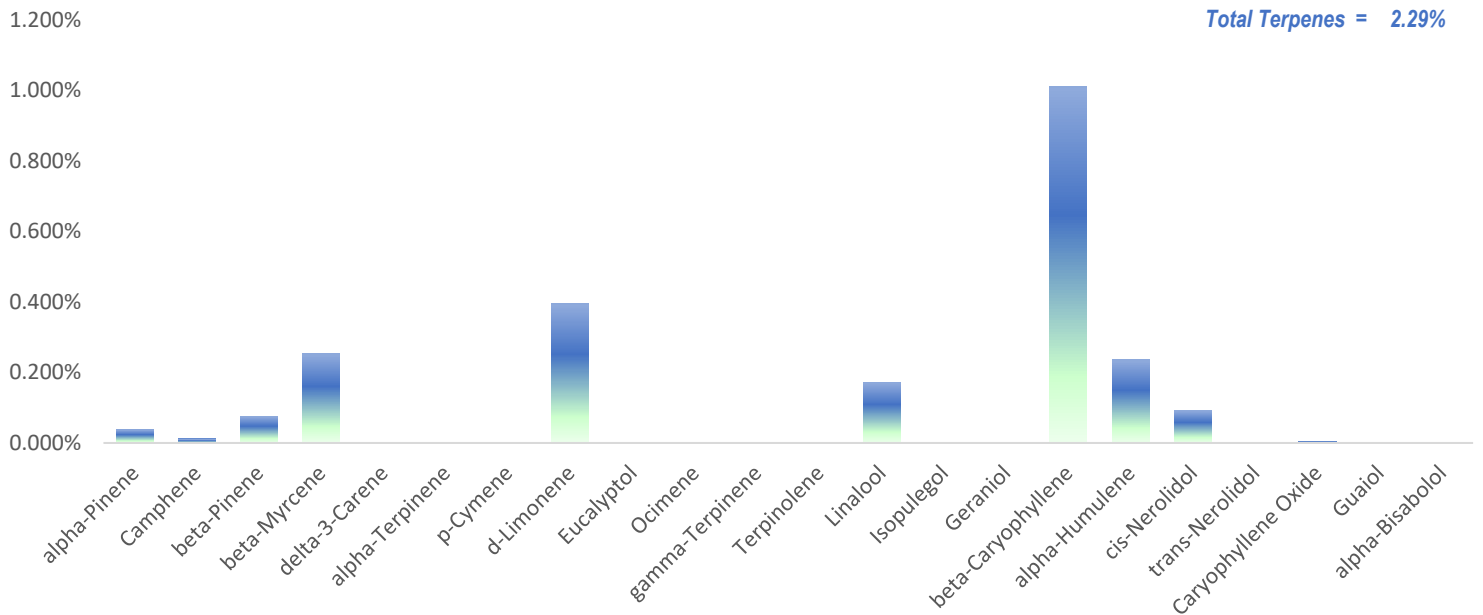
# Report: Evaluation Summary

OLCC License No. 10087092BDA | ORELAP ID. 4147

545 SW 2nd Street, Corvallis OR. 97333 | 541.257.5002 | services@preelab.com | Preelab.com

For OLCC/OHA Compliance Purposes.

Product Description		Evaluation Summary				
Client:	SoFresh Farms	Terpene Analysis	Compound	Dry Wt. %	Compound	Dry Wt. %
Product Name:	Bruce Banner		alpha-Pinene	0.039%	Terpinolene	0.001%
Harvest Lot:	RHR1 BRB 2/17/20		Camphene	0.012%	Linalool	0.172%
Matrix:	Cannabis Plant		beta-Pinene	0.076%	Isopulegol	0.000%
Metrc Source ID:	1A4010300001E17000006785		beta-Myrcene	0.253%	Geraniol	0.000%
Metrc Package ID:	1A4010300001E17000006783		delta-3-Carene	0.000%	beta-Caryophyllene	1.011%
License Number:	020-100010499D8		alpha-Terpinene	0.000%	alpha-Humulene	0.236%
Report ID:	A1525-05		p-Cymene	0.000%	cis-Nerolidol	0.093%
Date Collected:	2020-05-06		d-Limonene	0.394%	trans-Nerolidol	0.000%
Date Received:	2020-05-06		Eucalyptol	0.000%	Caryophyllene Oxide	0.005%
Report Date:	2020-05-11		Ocimene	0.000%	Guaiol	0.000%
			gamma-Terpinene	0.000%	alpha-Bisabolol	0.000%



**Bruce Banner has the highest concentration of the following terpene(s)...**

**beta-Caryophyllene**

Caryophyllene can be found at high concentrations in black pepper, cloves, and cinnamon. It has a spicy/peppery aroma.



**d-Limonene**

Found in lemon and orange peels. Limonene is characterized for having a lemon like aroma.



**beta-Myrcene**

A pleasant aroma. Myrcene is found in mangoes, hops, bay laurel leaves, thyme, lemongrass and basil.



# Report: Case Narrative

*This certificate of analysis is prepared for...*

**SoFresh Farms**

**27135 S Gribble Rd. Canby, OR 97103**

This report presents the analytical findings for the sample collected on 2020-05-06 by Dan Hanshaw using sampling plan A1525 and received by PREE Laboratory on 2020-05-06. The sample was assigned a laboratory ID of A1525-05. The results in this report only apply to sample A1525-05.

This report shall not be reproduced, except in full, without written consent of PREE Laboratory. Report alterations by any other entity beside PREE Laboratory are not allowed. If alterations are made to the original report after the initial release, they will be noted on the case narrative below.

The testing methods used are of sufficient sensitivity to meet the compliance criteria set in OAR 333-007. However, it is the responsibility of the client to utilize the data to comply with standards set in OAR 333-007.

All analyses were performed in accordance with PREE Laboratory's NELAP/TNI approved quality control system and all quality control data was within the laboratory's predefined acceptance criteria unless otherwise noted in the case narrative of this report. General comments are also recorded below.

**Notes:**

Pesticides: The initial calibration verification for the following analytes did not meet the acceptance criteria:  
Chlorantraniliprole, Permethrin



Sardar, Tamzid M. | Laboratory Director  
Corvallis, Oregon



*If you have any questions regarding the information in this report, please feel free to call 541-257-5002 or email PREE at services@preelab.com.*

# Report: Evaluation Detail

OLCC License No. 10087092BDA | ORELAP ID. 4147

545 SW 2nd Street, Corvallis OR. 97333 | 541.257.5002 | services@preelab.com | Preelab.com

For OLCC/OHA Compliance Purposes.

<b>Water Activity</b>	<b>Evaluation Detail</b>					
Product Name: <b>Bruce Banner</b>	Water Activity	Tested Value (aw)	Pass Criteria (aw)	LOQ (aw)	Status Pass/Unsatisfactory	
Analysis Date: 2020-05-07		0.484 aw	< 0.65 aw	0.001 aw	Pass	
Testing Batch ID: V597,596						
Testing Method: LSOP #302, Water Activity						
<b>Moisture Analysis</b>	<b>Evaluation Detail</b>					
Product Name: <b>Bruce Banner</b>	Moisture Analysis	Tested Value (Moisture %)	Pass Criteria (%)	LOQ (%)	Status Pass/Unsatisfactory	
Analysis Date: 2020-05-07		5.93 %	< 15.0 %	0.01 %	Pass	
Testing Batch ID: V597,596						
Testing Method: LSOP #301 Moisture Analysis						
<b>Cannabinoid Potency Analysis</b>	<b>Evaluation Detail</b>					
Product Name: <b>Bruce Banner</b>	Cannabinoid Potency Analysis	Compound	Abrv.	Dry Wt. (%)	Dry Wt. (mg/g)	RL (%)
Analysis Date: 2020-05-07	<b>Total THC *</b>	Tetrahydro-cannabinolic acid	THCA	29.12 %	291.2	0.1 %
	<b>26.24 %</b>	Delta9 Tetrahydro-cannabinol	Δ-9-THC	0.71 %	7.1	0.1 %
	<b>262.4 mg/g</b>	Delta8 Tetrahydro-cannabinol	Δ-8-THC	< LOQ	< LOQ	0.1 %
		Tetrahydrocannabivarin	THCV	< LOQ	< LOQ	0.1 %
Testing Batch ID: V597,596	<b>Total CBD *</b>	Cannabidiolic acid	CBDA	0.15 %	1.5	0.1 %
	<b>0.13 %</b>	Cannabidiol	CBD	< LOQ	< LOQ	0.1 %
	<b>1.3 mg/g</b>	Cannabigerolic acid	CBGA	0.99 %	9.9	0.1 %
		Cannabigerol	CBG	0.23 %	2.3	0.1 %
		Cannabidivarinic acid	CBDVA	< LOQ	< LOQ	0.1 %
		Cannabidivarin	CBDV	< LOQ	< LOQ	0.1 %
		Cannabinol	CBN	< LOQ	< LOQ	0.1 %
		Cannabicyclol	CBL	< LOQ	< LOQ	0.1 %
		Cannabichromene	CBC	< LOQ	< LOQ	0.1 %
Testing Method: LSOP #303 Cannabinoid Quantification						

Note: Accreditation for Δ-8-THC, THCV, CBGA, CBG, CBDVA, CBDV, CBL, CBC is not offered by ORELAP and therefore are not accredited tests.

\* moisture compensated & adjusted for the loss of carboxylic acid group - OAR 333-064-0100

# Report: Evaluation Detail

OLCC License No. 10087092BDA | ORELAP ID. 4147

545 SW 2nd Street, Corvallis OR. 97333 | 541.257.5002 | services@preelab.com | Preelab.com

For OLCC/OHA Compliance Purposes.

## Pesticide Analysis

Product Name: **Bruce Banner**

### LCMS

Analysis Date: 2020-05-07

Testing Batch ID: V597,596

Testing Method: LSOP #307 Pesticides by LCMS

### GCMS

Analysis Date: 2020-05-07

Testing Batch ID: V597,596

Testing Method: LSOP #305 Pesticides by GCMS

## Evaluation Detail

Pesticide Name	Tested Value (ppm)	Pass Criteria (ppm)	LOQ (ppm)	Status Pass/Unsatisfactory
Abamectin B1a	< LOQ	0.50	0.20	Pass
Acephate	< LOQ	0.40	0.20	Pass
Acequinocyl	< LOQ	2.00	0.20	Pass
Acetamiprid	< LOQ	0.20	0.20	Pass
Aldicarb	< LOQ	0.40	0.20	Pass
Azoxystrobin	< LOQ	0.20	0.20	Pass
Bifenazate	< LOQ	0.20	0.20	Pass
Bifenthrin	< LOQ	0.20	0.20	Pass
Boscalid	< LOQ	0.40	0.20	Pass
Carbaryl	< LOQ	0.20	0.20	Pass
Carbofuran	< LOQ	0.20	0.20	Pass
Chlorantraniliprole	< LOQ	0.20	0.20	Pass
Chlorfenapyr***	< LOQ	1.00	0.10	Pass
Chlorpyrifos	< LOQ	0.20	0.20	Pass
Clofentezine	< LOQ	0.20	0.20	Pass
Cyfluthrin***	< LOQ	1.00	1.00	Pass
Cypermethrin***	< LOQ	1.00	1.00	Pass
Daminozide	< LOQ	1.00	0.20	Pass
Diazinon	< LOQ	0.20	0.20	Pass
Dichlorvos	< LOQ	1.00	0.20	Pass
Dimethoate	< LOQ	0.20	0.20	Pass
Ethoprophos	< LOQ	0.20	0.20	Pass
Etofenprox	< LOQ	0.40	0.20	Pass
Etoxazole	< LOQ	0.20	0.20	Pass
Fenoxycarb	< LOQ	0.20	0.20	Pass
Fenpyroximate	< LOQ	0.40	0.20	Pass
Fipronil***	< LOQ	0.40	0.10	Pass
Fonicamid	< LOQ	1.00	0.20	Pass
Fludioxonil***	< LOQ	0.40	0.20	Pass
Hexythiazox	< LOQ	1.00	0.20	Pass
Imazalil	< LOQ	0.20	0.20	Pass
Imidacloprid	< LOQ	0.40	0.20	Pass
Kresoxim-methyl	< LOQ	0.40	0.20	Pass

\*\*\* Compounds were tested on GCMS. All others on LCMS. Continued on next page...

# Report: Evaluation Detail



OLCC License No. 10087092BDA | ORELAP ID. 4147

545 SW 2nd Street, Corvallis OR. 97333 | 541.257.5002 | services@preelab.com | Preelab.com

For OLCC/OHA Compliance Purposes.

## Pesticide Analysis

## Evaluation Detail

Pesticide Name	Tested Value (ppm)	Pass Criteria (ppm)	LOQ (ppm)	Status Pass/Unsatisfactory
Malathion	< LOQ	0.20	0.20	Pass
Metalaxyl	< LOQ	0.20	0.20	Pass
Methiocarb	< LOQ	0.20	0.20	Pass
Methomyl	< LOQ	0.40	0.20	Pass
MGK-264	< LOQ	0.20	0.20	Pass
Myclobutanil	< LOQ	0.20	0.20	Pass
Naled	< LOQ	0.50	0.20	Pass
Oxamyl	< LOQ	1.00	0.20	Pass
Paclobutrazol	< LOQ	0.40	0.20	Pass
Parathion-methyl***	< LOQ	0.20	0.10	Pass
Permethrin, cis-trans	< LOQ	0.20	0.20	Pass
Phosmet	< LOQ	0.20	0.20	Pass
Piperonyl butoxide	< LOQ	2.00	0.20	Pass
Prallethrin	< LOQ	0.20	0.20	Pass
Propiconazole***	< LOQ	0.40	0.20	Pass
Propoxur	< LOQ	0.20	0.20	Pass
Pyrethrins (3 isomers)	< LOQ	1.00	0.20	Pass
Pyridaben	< LOQ	0.20	0.20	Pass
Spinosad	< LOQ	0.20	0.20	Pass
Spiromesifen	< LOQ	0.20	0.20	Pass
Spirotetramat	< LOQ	0.20	0.20	Pass
Spiroxamine	< LOQ	0.40	0.20	Pass
Tebuconazole	< LOQ	0.40	0.20	Pass
Thiacloprid	< LOQ	0.20	0.20	Pass
Thiamethoxam	< LOQ	0.20	0.20	Pass
Trifloxystrobin	< LOQ	0.20	0.20	Pass

\*\*\* Compounds were tested on GCMS. All others on LCMS.

# Report: Evaluation Detail

OLCC License No. 10087092BDA | ORELAP ID. 4147

545 SW 2nd Street, Corvallis OR. 97333 | 541.257.5002 | services@preelab.com | Preelab.com

For OLCC/OHA Compliance Purposes.

## Terpene Analysis

Product Name: **Bruce Banner**

Analysis Date: 2020-05-07

Testing Batch ID: V597,596,595

Testing Method: LSOP #306 Terpene Analysis

## Evaluation Detail

Terpene Analysis	Compound	Dry Wt. %	Dry Wt. (mg/g)	RL %
	alpha-Pinene	0.039%	0.387	0.010%
	Camphene	0.012%	0.119	0.010%
	beta-Pinene	0.076%	0.762	0.010%
	beta-Myrcene	0.253%	2.527	0.010%
	delta-3-Carene	0.000%	0.000	0.010%
	alpha-Terpinene	0.000%	0.000	0.010%
	p-Cymene	0.000%	0.000	0.010%
	d-Limonene	0.394%	3.941	0.010%
	Eucalyptol	0.000%	0.000	0.010%
	Ocimene	0.000%	0.000	0.010%
	gamma-Terpinene	0.000%	0.000	0.010%
	Terpinolene	0.001%	0.010	0.010%
	Linalool	0.172%	1.721	0.010%
	Isopulegol	0.000%	0.000	0.010%
	Geraniol	0.000%	0.000	0.010%
	beta-Caryophyllene	1.011%	10.105	0.010%
	alpha-Humulene	0.236%	2.355	0.010%
	cis-Nerolidol	0.093%	0.932	0.010%
	trans-Nerolidol	0.000%	0.000	0.010%
	Caryophyllene Oxide	0.005%	0.046	0.010%
	Guaiol	0.000%	0.000	0.010%
	alpha-Bisabolol	0.000%	0.000	0.010%
	<b>Total Terpenes</b>	<b>2.29%</b>	<b>22.905 mg/g</b>	

Note: Accreditation for Terpenes is not offered by ORELAP and therefore is not an accredited test. For QC information, please reach out to PREE Laboratories.

# Report: Quality Check



OLCC License No. 10087092BDA | ORELAP ID. 4147

545 SW 2nd Street, Corvallis OR, 97333 | 541.257.5002 | services@preelab.com | Preelab.com

For OLCC/OHA Compliance Purposes.

<b>Water Activity</b>		<b>Quality Control Detail</b>						
Analysis Date:	2020-05-07	Water Activity Analysis		MB	LCS	Expected Value (aw)	Tested Value (aw)	Pass Criteria
Testing Batch ID:	V597,596			○		1.0000	0.9972	aw ± 0.010
					●	0.5289	0.5223	aw ± 0.010
<b>Moisture Analysis</b>		<b>Quality Control Detail</b>						
Analysis Date:	2020-05-07	Moisture Analysis		MB	LCS	Expected Value (%)	Tested Value (%)	Pass Criteria
Testing Batch ID:	V597,596			○		0.0%	1.0%	± 2.5%
					●	100.0%	101.0%	± 2.5%
<b>Cannabinoid Potency Analysis</b>		<b>Quality Control Detail</b>						
Analysis Date:	2020-05-07	Cannabinoid Potency Analysis		MB	LCS	Expected Value (%)	Tested Value (%)	Pass Criteria
Testing Batch ID:	V597,596	Tetrahydro-cannabinolic acid		○		< 0.1%	< 0.1%	< 0.1%
		Delta9 Tetrahydro-cannabinol		○		< 0.1%	< 0.1%	< 0.1%
		Cannabidiolic acid		○		< 0.1%	< 0.1%	< 0.1%
		Cannabidiol		○		< 0.1%	< 0.1%	< 0.1%
		Cannabinol		○		< 0.1%	< 0.1%	< 0.1%
		Tetrahydro-cannabinolic acid			●	100.0%	96.2%	80%-120%
		Delta9 Tetrahydro-cannabinol			●	100.0%	103.1%	80%-120%
		Cannabidiolic acid			●	100.0%	92.5%	80%-120%
		Cannabidiol			●	100.0%	91.0%	80%-120%
		Cannabinol			●	100.0%	98.9%	80%-120%



# Report: Quality Check



OLCC License No. 10087092BDA | ORELAP ID. 4147

545 SW 2nd Street, Corvallis OR. 97333 | 541.257.5002 | services@preelab.com | Preelab.com

For OLCC/OHA Compliance Purposes.

<b>Pesticide Analysis</b>		<b>Quality Control Detail</b>					
		Pesticide Name	MB	LCS	Expected Value (ppm)	Tested Value (ppm)	Pass Criteria (ppm)
<b>LCMS</b>							
Analysis Date:	2020-05-07	Abamectin	o		< 0.25	< 0.25	< 0.25
Testing Batch ID:	V597,596	Acephate	o		< 0.2	< 0.2	< 0.2
		Acequinocyl	o		< 1	< 1	< 1
<b>GCMS</b>		Acetamiprid	o		< 0.1	< 0.1	< 0.1
Analysis Date:	2020-05-07	Aldicarb	o		< 0.2	< 0.2	< 0.2
Testing Batch ID:	V597,596	Azoxystrobin	o		< 0.1	< 0.1	< 0.1
		Bifenazate	o		< 0.1	< 0.1	< 0.1
		Bifenthrin	o		< 0.1	< 0.1	< 0.1
		Boscalid	o		< 0.2	< 0.2	< 0.2
		Carbaryl	o		< 0.1	< 0.1	< 0.1
		Carbofuran	o		< 0.1	< 0.1	< 0.1
		Chlorantraniliprole	o		< 0.1	< 0.1	< 0.1
		Chlorfenapyr***	o		< 0.5	< 0.5	< 0.5
		Chlorpyrifos	o		< 0.1	< 0.1	< 0.1
		Clofentezine	o		< 0.1	< 0.1	< 0.1
		Cyfluthrin***	o		< 0.5	< 0.5	< 0.5
		Cypermethrin***	o		< 0.5	< 0.5	< 0.5
		Daminozide	o		< 0.5	< 0.5	< 0.5
		Diazinon	o		< 0.1	< 0.1	< 0.1
		Dichlorvos	o		< 0.5	< 0.5	< 0.5
		Dimethoate	o		< 0.1	< 0.1	< 0.1
		Ethoprophos	o		< 0.1	< 0.1	< 0.1
		Etofenprox	o		< 0.2	< 0.2	< 0.2
		Etoxazole	o		< 0.1	< 0.1	< 0.1
		Fenoxycarb	o		< 0.1	< 0.1	< 0.1
		Fenpyroximate	o		< 0.2	< 0.2	< 0.2
		Fipronil***	o		< 0.2	< 0.2	< 0.2
		Flonicamid	o		< 0.5	< 0.5	< 0.5
		Fludioxonil***	o		< 0.2	< 0.2	< 0.2
		Hexythiazox	o		< 0.5	< 0.5	< 0.5
		Imazalil	o		< 0.1	< 0.1	< 0.1
		Imidacloprid	o		< 0.2	< 0.2	< 0.2
		Kresoxim-methyl	o		< 0.2	< 0.2	< 0.2

\*\*\* Compounds were tested on GCMS. All others on LCMS. Continued on next page...

# Report: Quality Check



OLCC License No. 10087092BDA | ORELAP ID. 4147

545 SW 2nd Street, Corvallis OR. 97333 | 541.257.5002 | services@preelab.com | Preelab.com

For OLCC/OHA Compliance Purposes.

## Pesticide Analysis

## Quality Control Detail

Pesticide Name	MB	LCS	Expected Value (ppm)	Tested Value (ppm)	Pass Criteria (ppm)
Malathion	○		< 0.1	< 0.1	< 0.1
Metalaxyl	○		< 0.1	< 0.1	< 0.1
Methiocarb	○		< 0.1	< 0.1	< 0.1
Methomyl	○		< 0.2	< 0.2	< 0.2
MGK-264	○		< 0.1	< 0.1	< 0.1
Myclobutanil	○		< 0.1	< 0.1	< 0.1
Naled	○		< 0.25	< 0.25	< 0.25
Oxamyl	○		< 0.5	< 0.5	< 0.5
Paclobutrazol	○		< 0.2	< 0.2	< 0.2
Parathion-methyl***	○		< 0.1	< 0.1	< 0.1
Permethrin, cis-trans	○		< 0.1	< 0.1	< 0.1
Phosmet	○		< 0.1	< 0.1	< 0.1
Piperonyl butoxide	○		< 1	< 1	< 1
Prallethrin	○		< 0.1	< 0.1	< 0.1
Propiconazole***	○		< 0.2	< 0.2	< 0.2
Propoxur	○		< 0.1	< 0.1	< 0.1
Pyrethrins (3 isomers)	○		< 0.5	< 0.5	< 0.5
Pyridaben	○		< 0.1	< 0.1	< 0.1
Spinosad	○		< 0.1	< 0.1	< 0.1
Spiromesifen	○		< 0.1	< 0.1	< 0.1
Spirotetramat	○		< 0.1	< 0.1	< 0.1
Spiroxamine	○		< 0.2	< 0.2	< 0.2
Tebuconazole	○		< 0.2	< 0.2	< 0.2
Thiacloprid	○		< 0.1	< 0.1	< 0.1
Thiamethoxam	○		< 0.1	< 0.1	< 0.1
Trifloxystrobin	○		< 0.1	< 0.1	< 0.1
Abamectin		●	1.5	1.798	0.15 - 2.4
Acephate		●	1.5	1.579	0.15 - 2.4
Acequinocyl		●	1.5	1.872	0.15 - 2.4
Acetamiprid		●	1.5	1.673	0.15 - 2.4
Aldicarb		●	1.5	2.371	0.15 - 2.4
Azoxystrobin		●	1.5	1.812	0.15 - 2.4
Bifenazate		●	1.5	1.605	0.15 - 2.4

\*\*\* Compounds were tested on GCMS. All others on LCMS. Continued on next page...

# Report: Quality Check



OLCC License No. 10087092BDA | ORELAP ID. 4147

545 SW 2nd Street, Corvallis OR, 97333 | 541.257.5002 | services@preelab.com | Preelab.com

For OLCC/OHA Compliance Purposes.

## Pesticide Analysis

## Quality Control Detail

Pesticide Name	MB	LCS	Expected Value (ppm)	Tested Value (ppm)	Pass Criteria (ppm)
Bifenthrin		●	1.5	1.891	0.15 - 2.4
Boscalid		●	1.5	1.479	0.15 - 2.4
Carbaryl		●	1.5	1.669	0.15 - 2.4
Carbofuran		●	1.5	1.662	0.15 - 2.4
Chlorantraniliprole		●	1.5	1.825	0.15 - 2.4
Chlorfenapyr***		●	1.5	1.462	0.75 - 2.4
Chlorpyrifos		●	1.5	1.666	0.15 - 2.4
Clofentezine		●	1.5	1.622	0.15 - 2.4
Cyfluthrin***		●	1.5	1.386	0.75 - 2.4
Cypermethrin***		●	1.5	1.413	0.75 - 2.4
Daminozide		●	1.5	1.460	0.15 - 2.4
Diazinon		●	1.5	1.692	0.15 - 2.4
Dichlorvos		●	1.5	1.502	0.15 - 2.4
Dimethoate		●	1.5	1.334	0.15 - 2.4
Ethoprophos		●	1.5	1.655	0.15 - 2.4
Etofenprox		●	1.5	1.700	0.15 - 2.4
Etoxazole		●	1.5	1.815	0.15 - 2.4
Fenoxycarb		●	1.5	1.658	0.15 - 2.4
Fenpyroximate		●	1.5	1.735	0.15 - 2.4
Fipronil***		●	1.5	1.480	0.75 - 2.4
Fonicamid		●	1.5	1.376	0.15 - 2.4
Fludioxonil***		●	1.5	1.483	0.75 - 2.4
Hexythiazox		●	1.5	1.632	0.15 - 2.4
Imazalil		●	1.5	1.600	0.15 - 2.4
Imidacloprid		●	1.5	1.398	0.15 - 2.4
Kresoxim-methyl		●	1.5	1.332	0.15 - 2.4
Malathion		●	1.5	1.580	0.15 - 2.4
Metalaxyl		●	1.5	1.658	0.15 - 2.4
Methiocarb		●	1.5	1.520	0.15 - 2.4
Methomyl		●	1.5	1.591	0.15 - 2.4
MGK-264		●	1.5	1.904	0.15 - 2.4
Myclobutanil		●	1.5	1.643	0.15 - 2.4
Naled		●	1.5	1.758	0.15 - 2.4

\*\*\* Compounds were tested on GCMS. All others on LCMS. Continued on next page...

# Report: Quality Check



OLCC License No. 10087092BDA | ORELAP ID. 4147

545 SW 2nd Street, Corvallis OR. 97333 | 541.257.5002 | services@preelab.com | Preelab.com

For OLCC/OHA Compliance Purposes.

## Pesticide Analysis

## Quality Control Detail

Pesticide Name	MB	LCS	Expected Value (ppm)	Tested Value (ppm)	Pass Criteria (ppm)
Oxamyl		●	1.5	1.432	0.15 - 2.4
Paclobutrazol		●	1.5	1.657	0.15 - 2.4
Parathion-methyl***		●	1.5	1.568	0.75 - 2.4
Permethrin, cis-trans		●	1.5	1.811	0.15 - 2.4
Phosmet		●	1.5	1.375	0.15 - 2.4
Piperonyl butoxide		●	1.5	1.558	0.15 - 2.4
Prallethrin		●	1.5	1.509	0.15 - 2.4
Propiconazole***		●	1.5	1.656	0.15 - 2.4
Propoxur		●	1.5	1.738	0.15 - 2.4
Pyrethrins (3 isomers)		●	1.5	1.651	0.15 - 2.4
Pyridaben		●	1.5	1.631	0.15 - 2.4
Spinosad		●	1.5	1.725	0.15 - 2.4
Spiromesifen		●	1.5	1.583	0.15 - 2.4
Spirotetramat		●	1.5	1.658	0.15 - 2.4
Spiroxamine		●	1.5	1.522	0.15 - 2.4
Tebuconazole		●	1.5	1.700	0.15 - 2.4
Thiacloprid		●	1.5	1.308	0.15 - 2.4
Thiamethoxam		●	1.5	1.327	0.15 - 2.4
Trifloxystrobin		●	1.5	1.665	0.15 - 2.4

\*\*\* Compounds were tested on GCMS. All others on LCMS.

## Definitions

- Limit of Quantitation (LOQ): The minimum level, concentration, or quantity of a target analyte that can be reported with a specific degree of confidence.
- Method Blank (MB): A quality control sample that is free of the analyte being measured.
- Laboratory Control Sample (LCS): A quality control sample with a known amount of the analyte used to demonstrate accuracy.
- Field Duplicate: A second sample collected in the field using the same sampling method as the primary sample.
- Action Limit: Analyte levels set by the state of Oregon (OAR 333-007) indicating that follow-up action is necessary.
- ppm: parts per million, equivalent to 1 µg/g and 1 µg/L or 0.001 mg/g and 0.001 mg/L
- COA: Certificate of Analysis.

## Calculations

- Cannabinoid Potency :  
Wet WT% = (Exported concentration ppm) x (Dilution) x (Extraction Vol./Wet wt mg) x 100  
Total THC% = (%THCA) x 0.877 + (%THC)  
Total CBD% = (%CBDA) x 0.877 + (%CBD)  
Total THC (Dry WT)% = % total THC(wet) / [1-(% moisture/100)]  
Total CBD (Dry WT)% = % total CBD(wet) / [1-(% moisture/100)]
- Percentage Recovery :  
% Rec. = [(Amount measured) / (Known amount)] \* 100