

Report: COA Evaluation Summary

OLCC License No. 10087092BDA | ORELAP ID. 4147

545 SW 2nd Street, Corvallis OR. 97333 | 541.257.5002 | services@preelab.com | Preelab.com

For OLCC/OHA Compliance Purposes.

Product Description

Client: **SoFresh Farms**

Product Name: **Bavarian Cream**

Harvest Lot: RHR1 BC 2/28/20

Matrix: Cannabis Plant

Metric Source ID: 1A4010300001E17000006784

Metric Package ID: 1A4010300001E17000006782

License Number: 020-100010499D8

Report ID: A1525-04

Date Collected: 2020-05-06

Date Received: 2020-05-06

Report Date: 2020-05-11

Tests Requested: Water Activity
Moisture Analysis
Cannabinoid Potency Analysis
Pesticide Analysis
Terpene Analysis

Bavarian Cream

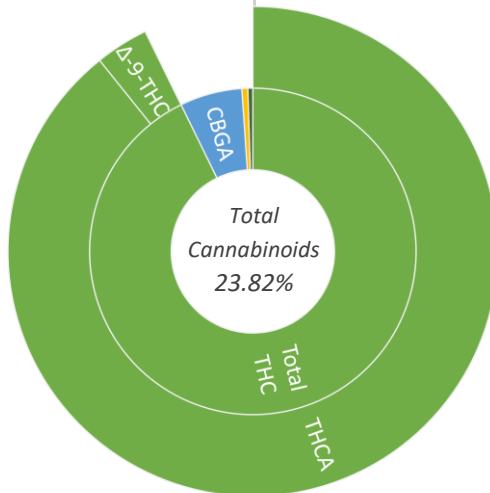


Evaluation Summary

Water Activity	Tested Value (aw)	Pass Criteria (aw)
Pass	0.493 aw	< 0.65 aw

Moisture Analysis	Tested Value (%)	Pass Criteria (%)
Pass	9.60 %	< 15.0 %

Cannabinoid Potency Analysis		Abv.	Dry Wt. %	Dry Wt. mg/g
Total THC *	19.48 %	THCA	21.25 %	212.5 mg/g
	194.8 mg/g	Δ-9-THC	0.84 %	8.4 mg/g
Total CBD *	< LOQ	Δ-8-THC	< LOQ	< LOQ
	< LOQ	THCV	< LOQ	< LOQ
		CBDA	< LOQ	< LOQ
		CBD	< LOQ	< LOQ
		CBGA	1.47 %	14.7 mg/g
		CBG	0.14 %	1.4 mg/g
		CBDVA	< LOQ	< LOQ
		CBDV	< LOQ	< LOQ
		CBN	< LOQ	< LOQ
		CBL	0.12 %	1.2 mg/g
		CBC	< LOQ	< LOQ



Pesticide Analysis	Pesticide Status
Pass	No Pesticides Were Detected above Oregon's action limit as stated in OAR 333-007-0400.

* moisture compensated & adjusted for the loss of carboxylic acid group - OAR 333-064-0100

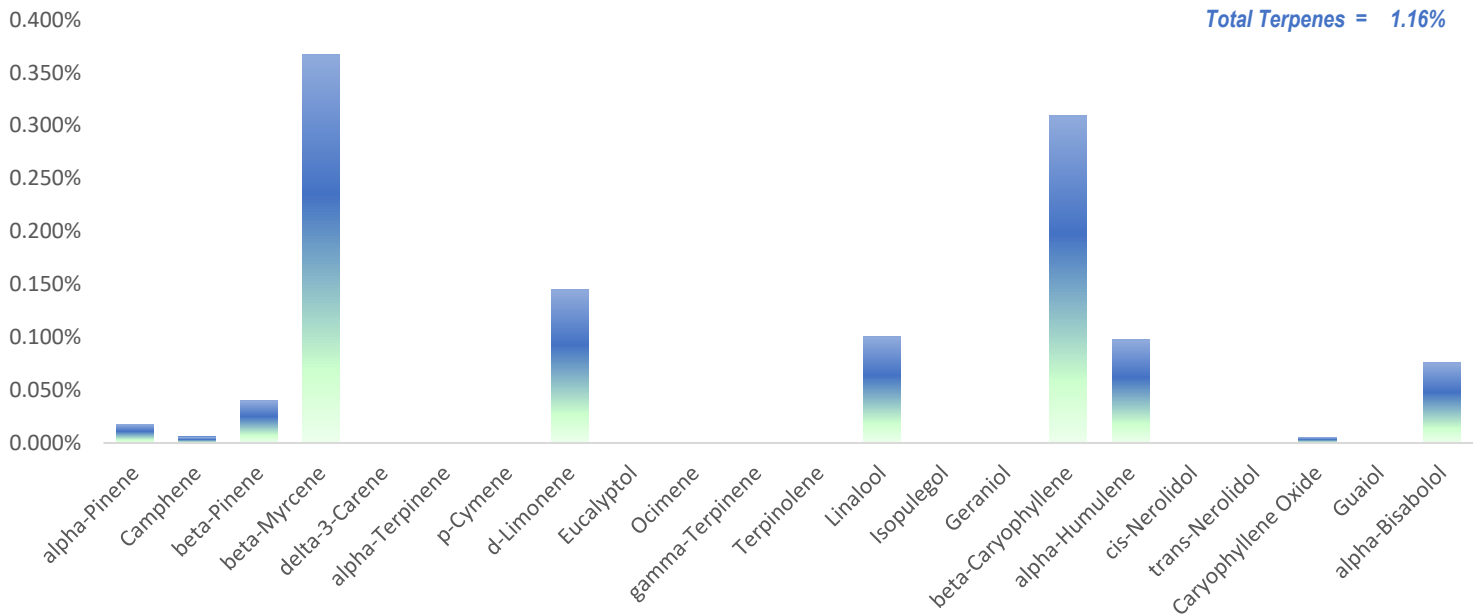
Report: Evaluation Summary

OLCC License No. 10087092BDA | ORELAP ID. 4147

545 SW 2nd Street, Corvallis OR. 97333 | 541.257.5002 | services@preelab.com | Preelab.com

For OLCC/OHA Compliance Purposes.

Product Description		Evaluation Summary				
Client:	SoFresh Farms	Terpene Analysis	Compound	Dry Wt. %	Compound	Dry Wt. %
Product Name:	Bavarian Cream		alpha-Pinene	0.018%	Terpinolene	0.000%
Harvest Lot:	RHR1 BC 2/28/20		Camphene	0.006%	Linalool	0.100%
Matrix:	Cannabis Plant		beta-Pinene	0.040%	Isopulegol	0.000%
Metrc Source ID:	1A4010300001E17000006784		beta-Myrcene	0.367%	Geraniol	0.000%
Metrc Package ID:	1A4010300001E17000006782		delta-3-Carene	0.000%	beta-Caryophyllene	0.309%
License Number:	020-100010499D8		alpha-Terpinene	0.000%	alpha-Humulene	0.097%
Report ID:	A1525-04		p-Cymene	0.000%	cis-Nerolidol	0.000%
Date Collected:	2020-05-06		d-Limonene	0.145%	trans-Nerolidol	0.000%
Date Received:	2020-05-06		Eucalyptol	0.000%	Caryophyllene Oxide	0.006%
Report Date:	2020-05-11		Ocimene	0.000%	Guaiol	0.000%
			gamma-Terpinene	0.000%	alpha-Bisabolol	0.076%



Bavarian Cream has the highest concentration of the following terpene(s)...

beta-Myrcene

A pleasant aroma. Myrcene is found in mangoes, hops, bay laurel leaves, thyme, lemongrass and basil.



beta-Caryophyllene

Caryophyllene can be found at high concentrations in black pepper, cloves, and cinnamon. It has a spicy/peppery aroma.



d-Limonene

Found in lemon and orange peels. Limonene is characterized for having a lemon like aroma.



Report: Case Narrative

This certificate of analysis is prepared for...

SoFresh Farms

27135 S Gribble Rd. Canby, OR 97103

This report presents the analytical findings for the sample collected on 2020-05-06 by Dan Hanshaw using sampling plan A1525 and received by PREE Laboratory on 2020-05-06. The sample was assigned a laboratory ID of A1525-04. The results in this report only apply to sample A1525-04.

This report shall not be reproduced, except in full, without written consent of PREE Laboratory. Report alterations by any other entity beside PREE Laboratory are not allowed. If alterations are made to the original report after the initial release, they will be noted on the case narrative below.

The testing methods used are of sufficient sensitivity to meet the compliance criteria set in OAR 333-007. However, it is the responsibility of the client to utilize the data to comply with standards set in OAR 333-007.

All analyses were performed in accordance with PREE Laboratory's NELAP/TNI approved quality control system and all quality control data was within the laboratory's predefined acceptance criteria unless otherwise noted in the case narrative of this report. General comments are also recorded below.

Notes:

Pesticides: The initial calibration verification for the following analytes did not meet the acceptance criteria:
Chlorantraniliprole, Permethrin



Sardar, Tamzid M. | Laboratory Director
Corvallis, Oregon



If you have any questions regarding the information in this report, please feel free to call 541-257-5002 or email PREE at services@preelab.com.

Report: Evaluation Detail

OLCC License No. 10087092BDA | ORELAP ID. 4147

545 SW 2nd Street, Corvallis OR. 97333 | 541.257.5002 | services@preelab.com | Preelab.com

For OLCC/OHA Compliance Purposes.

Water Activity	Evaluation Detail					
Product Name: Bavarian Cream	Water Activity	Tested Value (aw)	Pass Criteria (aw)	LOQ (aw)	Status Pass/Unsatisfactory	
Analysis Date: 2020-05-07		0.493 aw	< 0.65 aw	0.001 aw	Pass	
Testing Batch ID: V597,596						
Testing Method: LSOP #302, Water Activity						
Moisture Analysis	Evaluation Detail					
Product Name: Bavarian Cream	Moisture Analysis	Tested Value (Moisture %)	Pass Criteria (%)	LOQ (%)	Status Pass/Unsatisfactory	
Analysis Date: 2020-05-07		9.60 %	< 15.0 %	0.01 %	Pass	
Testing Batch ID: V597,596						
Testing Method: LSOP #301 Moisture Analysis						
Cannabinoid Potency Analysis	Evaluation Detail					
Product Name: Bavarian Cream	Cannabinoid Potency Analysis	Compound	Abrv.	Dry Wt. (%)	Dry Wt. (mg/g)	RL (%)
Analysis Date: 2020-05-17	Total THC *	Tetrahydro-cannabinolic acid	THCA	21.25 %	212.5	0.1 %
Testing Batch ID: V604,603,602,601,600,597	19.48 %	Delta9 Tetrahydro-cannabinol	Δ-9-THC	0.84 %	8.4	0.1 %
Testing Method: LSOP #303 Cannabinoid Quantification	194.8 mg/g	Delta8 Tetrahydro-cannabinol	Δ-8-THC	< LOQ	< LOQ	0.1 %
		Tetrahydrocannabivarin	THCV	< LOQ	< LOQ	0.1 %
	Total CBD *	Cannabidiolic acid	CBDA	< LOQ	< LOQ	0.1 %
	< LOQ	Cannabidiol	CBD	< LOQ	< LOQ	0.1 %
	< LOQ	Cannabigerolic acid	CBGA	1.47 %	14.7	0.1 %
		Cannabigerol	CBG	0.14 %	1.4	0.1 %
		Cannabidivarinic acid	CBDVA	< LOQ	< LOQ	0.1 %
		Cannabidivarin	CBDV	< LOQ	< LOQ	0.1 %
		Cannabinol	CBN	< LOQ	< LOQ	0.1 %
		Cannabicyclol	CBL	0.12 %	1.2	0.1 %
		Cannabichromene	CBC	< LOQ	< LOQ	0.1 %

Note: Accreditation for Δ-8-THC, THCV, CBGA, CBG, CBDVA, CBDV, CBL, CBC is not offered by ORELAP and therefore are not accredited tests.

* moisture compensated & adjusted for the loss of carboxylic acid group - OAR 333-064-0100

Report: Evaluation Detail

Pesticide Analysis

Product Name: **Bavarian Cream**

LCMS

Analysis Date: 2020-05-07

Testing Batch ID: V597,596

Testing Method: LSOP #307 Pesticides by LCMS

GCMS

Analysis Date: 2020-05-07

Testing Batch ID: V597,596

Testing Method: LSOP #305 Pesticides by GCMS

Evaluation Detail

Pesticide Name	Tested Value (ppm)	Pass Criteria (ppm)	LOQ (ppm)	Status Pass/Unsatisfactory
Abamectin B1a	< LOQ	0.50	0.20	Pass
Acephate	< LOQ	0.40	0.20	Pass
Acequinocyl	< LOQ	2.00	0.20	Pass
Acetamiprid	< LOQ	0.20	0.20	Pass
Aldicarb	< LOQ	0.40	0.20	Pass
Azoxystrobin	< LOQ	0.20	0.20	Pass
Bifenazate	< LOQ	0.20	0.20	Pass
Bifenthrin	< LOQ	0.20	0.20	Pass
Boscalid	< LOQ	0.40	0.20	Pass
Carbaryl	< LOQ	0.20	0.20	Pass
Carbofuran	< LOQ	0.20	0.20	Pass
Chlorantraniliprole	< LOQ	0.20	0.20	Pass
Chlorfenapyr***	< LOQ	1.00	0.10	Pass
Chlorpyrifos	< LOQ	0.20	0.20	Pass
Clofentezine	< LOQ	0.20	0.20	Pass
Cyfluthrin***	< LOQ	1.00	1.00	Pass
Cypermethrin***	< LOQ	1.00	1.00	Pass
Daminozide	< LOQ	1.00	0.20	Pass
Diazinon	< LOQ	0.20	0.20	Pass
Dichlorvos	< LOQ	1.00	0.20	Pass
Dimethoate	< LOQ	0.20	0.20	Pass
Ethoprophos	< LOQ	0.20	0.20	Pass
Etofenprox	< LOQ	0.40	0.20	Pass
Etoxazole	< LOQ	0.20	0.20	Pass
Fenoxycarb	< LOQ	0.20	0.20	Pass
Fenpyroximate	< LOQ	0.40	0.20	Pass
Fipronil***	< LOQ	0.40	0.10	Pass
Fonicamid	< LOQ	1.00	0.20	Pass
Fludioxonil***	< LOQ	0.40	0.20	Pass
Hexythiazox	< LOQ	1.00	0.20	Pass
Imazalil	< LOQ	0.20	0.20	Pass
Imidacloprid	< LOQ	0.40	0.20	Pass
Kresoxim-methyl	< LOQ	0.40	0.20	Pass

*** Compounds were tested on GCMS. All others on LCMS. Continued on next page...

Report: Evaluation Detail



OLCC License No. 10087092BDA | ORELAP ID. 4147

545 SW 2nd Street, Corvallis OR. 97333 | 541.257.5002 | services@preelab.com | Preelab.com

For OLCC/OHA Compliance Purposes.

Pesticide Analysis

Evaluation Detail

Pesticide Name	Tested Value (ppm)	Pass Criteria (ppm)	LOQ (ppm)	Status Pass/Unsatisfactory
Malathion	< LOQ	0.20	0.20	Pass
Metalaxyl	< LOQ	0.20	0.20	Pass
Methiocarb	< LOQ	0.20	0.20	Pass
Methomyl	< LOQ	0.40	0.20	Pass
MGK-264	< LOQ	0.20	0.20	Pass
Myclobutanil	< LOQ	0.20	0.20	Pass
Naled	< LOQ	0.50	0.20	Pass
Oxamyl	< LOQ	1.00	0.20	Pass
Paclobutrazol	< LOQ	0.40	0.20	Pass
Parathion-methyl***	< LOQ	0.20	0.10	Pass
Permethrin, cis-trans	< LOQ	0.20	0.20	Pass
Phosmet	< LOQ	0.20	0.20	Pass
Piperonyl butoxide	< LOQ	2.00	0.20	Pass
Prallethrin	< LOQ	0.20	0.20	Pass
Propiconazole***	< LOQ	0.40	0.20	Pass
Propoxur	< LOQ	0.20	0.20	Pass
Pyrethrins (3 isomers)	< LOQ	1.00	0.20	Pass
Pyridaben	< LOQ	0.20	0.20	Pass
Spinosad	< LOQ	0.20	0.20	Pass
Spiromesifen	< LOQ	0.20	0.20	Pass
Spirotetramat	< LOQ	0.20	0.20	Pass
Spiroxamine	< LOQ	0.40	0.20	Pass
Tebuconazole	< LOQ	0.40	0.20	Pass
Thiacloprid	< LOQ	0.20	0.20	Pass
Thiamethoxam	< LOQ	0.20	0.20	Pass
Trifloxystrobin	< LOQ	0.20	0.20	Pass

*** Compounds were tested on GCMS. All others on LCMS.

Report: Evaluation Detail

OLCC License No. 10087092BDA | ORELAP ID. 4147

545 SW 2nd Street, Corvallis OR. 97333 | 541.257.5002 | services@preelab.com | Preelab.com

For OLCC/OHA Compliance Purposes.

Terpene Analysis

Product Name: **Bavarian Cream**

Analysis Date: 2020-05-07

Testing Batch ID: V597,596,595

Testing Method: LSOP #306 Terpene Analysis

Evaluation Detail

Terpene Analysis	Compound	Dry Wt. %	Dry Wt. (mg/g)	RL %
	alpha-Pinene	0.018%	0.178	0.010%
	Camphene	0.006%	0.056	0.010%
	beta-Pinene	0.040%	0.401	0.010%
	beta-Myrcene	0.367%	3.674	0.010%
	delta-3-Carene	0.000%	0.000	0.010%
	alpha-Terpinene	0.000%	0.000	0.010%
	p-Cymene	0.000%	0.000	0.010%
	d-Limonene	0.145%	1.449	0.010%
	Eucalyptol	0.000%	0.000	0.010%
	Ocimene	0.000%	0.000	0.010%
	gamma-Terpinene	0.000%	0.000	0.010%
	Terpinolene	0.000%	0.000	0.010%
	Linalool	0.100%	1.003	0.010%
	Isopulegol	0.000%	0.000	0.010%
	Geraniol	0.000%	0.000	0.010%
	beta-Caryophyllene	0.309%	3.094	0.010%
	alpha-Humulene	0.097%	0.973	0.010%
	cis-Nerolidol	0.000%	0.000	0.010%
	trans-Nerolidol	0.000%	0.000	0.010%
	Caryophyllene Oxide	0.006%	0.056	0.010%
	Guaiol	0.000%	0.003	0.010%
	alpha-Bisabolol	0.076%	0.756	0.010%
	Total Terpenes	1.16%	11.644 mg/g	

Note: Accreditation for Terpenes is not offered by ORELAP and therefore is not an accredited test. For QC information, please reach out to PREE Laboratories.

Report: Quality Check



OLCC License No. 10087092BDA | ORELAP ID. 4147

545 SW 2nd Street, Corvallis OR, 97333 | 541.257.5002 | services@preelab.com | Preelab.com

For OLCC/OHA Compliance Purposes.

Water Activity		Quality Control Detail						
Analysis Date:	2020-05-07	Water Activity Analysis		MB	LCS	Expected Value (aw)	Tested Value (aw)	Pass Criteria
Testing Batch ID:	V597,596			○		1.0000	0.9972	aw ± 0.010
					●	0.5289	0.5223	aw ± 0.010
Moisture Analysis		Quality Control Detail						
Analysis Date:	2020-05-07	Moisture Analysis		MB	LCS	Expected Value (%)	Tested Value (%)	Pass Criteria
Testing Batch ID:	V597,596			○		0.0%	1.2%	± 2.5%
					●	100.0%	100.8%	± 2.5%
Cannabinoid Potency Analysis		Quality Control Detail						
Analysis Date:	2020-05-17	Cannabinoid Potency Analysis		MB	LCS	Expected Value (%)	Tested Value (%)	Pass Criteria
Testing Batch ID:	V604,603,602,601,600,597	Tetrahydro-cannabinolic acid		○		< 0.1%	< 0.1%	< 0.1%
		Delta9 Tetrahydro-cannabinol		○		< 0.1%	< 0.1%	< 0.1%
		Cannabidiolic acid		○		< 0.1%	< 0.1%	< 0.1%
		Cannabidiol		○		< 0.1%	< 0.1%	< 0.1%
		Cannabinol		○		< 0.1%	< 0.1%	< 0.1%
		Tetrahydro-cannabinolic acid			●	100.0%	95.9%	80%-120%
		Delta9 Tetrahydro-cannabinol			●	100.0%	99.8%	80%-120%
		Cannabidiolic acid			●	100.0%	91.3%	80%-120%
		Cannabidiol			●	100.0%	89.4%	80%-120%
		Cannabinol			●	100.0%	96.7%	80%-120%

Report: Quality Check



OLCC License No. 10087092BDA | ORELAP ID. 4147

545 SW 2nd Street, Corvallis OR, 97333 | 541.257.5002 | services@preelab.com | Preelab.com

For OLCC/OHA Compliance Purposes.

Pesticide Analysis		Quality Control Detail					
		Pesticide Name	MB	LCS	Expected Value (ppm)	Tested Value (ppm)	Pass Criteria (ppm)
LCMS							
Analysis Date:	2020-05-07	Abamectin	o		< 0.25	< 0.25	< 0.25
Testing Batch ID:	V597,596	Acephate	o		< 0.2	< 0.2	< 0.2
		Acequinocyl	o		< 1	< 1	< 1
		Acetamiprid	o		< 0.1	< 0.1	< 0.1
		Aldicarb	o		< 0.2	< 0.2	< 0.2
		Azoxystrobin	o		< 0.1	< 0.1	< 0.1
		Bifenazate	o		< 0.1	< 0.1	< 0.1
		Bifenthrin	o		< 0.1	< 0.1	< 0.1
		Boscalid	o		< 0.2	< 0.2	< 0.2
		Carbaryl	o		< 0.1	< 0.1	< 0.1
		Carbofuran	o		< 0.1	< 0.1	< 0.1
		Chlorantraniliprole	o		< 0.1	< 0.1	< 0.1
		Chlorfenapyr***	o		< 0.5	< 0.5	< 0.5
		Chlorpyrifos	o		< 0.1	< 0.1	< 0.1
		Clofentezine	o		< 0.1	< 0.1	< 0.1
		Cyfluthrin***	o		< 0.5	< 0.5	< 0.5
		Cypermethrin***	o		< 0.5	< 0.5	< 0.5
		Daminozide	o		< 0.5	< 0.5	< 0.5
		Diazinon	o		< 0.1	< 0.1	< 0.1
		Dichlorvos	o		< 0.5	< 0.5	< 0.5
		Dimethoate	o		< 0.1	< 0.1	< 0.1
		Ethoprophos	o		< 0.1	< 0.1	< 0.1
		Etofenprox	o		< 0.2	< 0.2	< 0.2
		Etoxazole	o		< 0.1	< 0.1	< 0.1
		Fenoxycarb	o		< 0.1	< 0.1	< 0.1
		Fenpyroximate	o		< 0.2	< 0.2	< 0.2
		Fipronil***	o		< 0.2	< 0.2	< 0.2
		Flonicamid	o		< 0.5	< 0.5	< 0.5
		Fludioxonil***	o		< 0.2	< 0.2	< 0.2
		Hexythiazox	o		< 0.5	< 0.5	< 0.5
		Imazalil	o		< 0.1	< 0.1	< 0.1
		Imidacloprid	o		< 0.2	< 0.2	< 0.2
		Kresoxim-methyl	o		< 0.2	< 0.2	< 0.2

*** Compounds were tested on GCMS. All others on LCMS. Continued on next page...

Report: Quality Check



OLCC License No. 10087092BDA | ORELAP ID. 4147

545 SW 2nd Street, Corvallis OR. 97333 | 541.257.5002 | services@preelab.com | Preelab.com

For OLCC/OHA Compliance Purposes.

Pesticide Analysis

Quality Control Detail

Pesticide Name	MB	LCS	Expected Value (ppm)	Tested Value (ppm)	Pass Criteria (ppm)
Malathion	o		< 0.1	< 0.1	< 0.1
Metalaxyl	o		< 0.1	< 0.1	< 0.1
Methiocarb	o		< 0.1	< 0.1	< 0.1
Methomyl	o		< 0.2	< 0.2	< 0.2
MGK-264	o		< 0.1	< 0.1	< 0.1
Myclobutanil	o		< 0.1	< 0.1	< 0.1
Naled	o		< 0.25	< 0.25	< 0.25
Oxamyl	o		< 0.5	< 0.5	< 0.5
Paclobutrazol	o		< 0.2	< 0.2	< 0.2
Parathion-methyl***	o		< 0.1	< 0.1	< 0.1
Permethrin, cis-trans	o		< 0.1	< 0.1	< 0.1
Phosmet	o		< 0.1	< 0.1	< 0.1
Piperonyl butoxide	o		< 1	< 1	< 1
Prallethrin	o		< 0.1	< 0.1	< 0.1
Propiconazole***	o		< 0.2	< 0.2	< 0.2
Propoxur	o		< 0.1	< 0.1	< 0.1
Pyrethrins (3 isomers)	o		< 0.5	< 0.5	< 0.5
Pyridaben	o		< 0.1	< 0.1	< 0.1
Spinosad	o		< 0.1	< 0.1	< 0.1
Spiromesifen	o		< 0.1	< 0.1	< 0.1
Spirotetramat	o		< 0.1	< 0.1	< 0.1
Spiroxamine	o		< 0.2	< 0.2	< 0.2
Tebuconazole	o		< 0.2	< 0.2	< 0.2
Thiacloprid	o		< 0.1	< 0.1	< 0.1
Thiamethoxam	o		< 0.1	< 0.1	< 0.1
Trifloxystrobin	o		< 0.1	< 0.1	< 0.1
Abamectin		●	1.5	1.798	0.15 - 2.4
Acephate		●	1.5	1.579	0.15 - 2.4
Acequinocyl		●	1.5	1.872	0.15 - 2.4
Acetamiprid		●	1.5	1.673	0.15 - 2.4
Aldicarb		●	1.5	2.371	0.15 - 2.4
Azoxystrobin		●	1.5	1.812	0.15 - 2.4
Bifenazate		●	1.5	1.605	0.15 - 2.4

*** Compounds were tested on GCMS. All others on LCMS. Continued on next page...

Report: Quality Check



OLCC License No. 10087092BDA | ORELAP ID. 4147

545 SW 2nd Street, Corvallis OR, 97333 | 541.257.5002 | services@preelab.com | Preelab.com

For OLCC/OHA Compliance Purposes.

Pesticide Analysis

Quality Control Detail

Pesticide Name	MB	LCS	Expected Value (ppm)	Tested Value (ppm)	Pass Criteria (ppm)
Bifenthrin		●	1.5	1.891	0.15 - 2.4
Boscalid		●	1.5	1.479	0.15 - 2.4
Carbaryl		●	1.5	1.669	0.15 - 2.4
Carbofuran		●	1.5	1.662	0.15 - 2.4
Chlorantraniliprole		●	1.5	1.825	0.15 - 2.4
Chlorfenapyr***		●	1.5	1.462	0.75 - 2.4
Chlorpyrifos		●	1.5	1.666	0.15 - 2.4
Clofentezine		●	1.5	1.622	0.15 - 2.4
Cyfluthrin***		●	1.5	1.386	0.75 - 2.4
Cypermethrin***		●	1.5	1.413	0.75 - 2.4
Daminozide		●	1.5	1.460	0.15 - 2.4
Diazinon		●	1.5	1.692	0.15 - 2.4
Dichlorvos		●	1.5	1.502	0.15 - 2.4
Dimethoate		●	1.5	1.334	0.15 - 2.4
Ethoprophos		●	1.5	1.655	0.15 - 2.4
Etofenprox		●	1.5	1.700	0.15 - 2.4
Etoxazole		●	1.5	1.815	0.15 - 2.4
Fenoxycarb		●	1.5	1.658	0.15 - 2.4
Fenpyroximate		●	1.5	1.735	0.15 - 2.4
Fipronil***		●	1.5	1.480	0.75 - 2.4
Fonicamid		●	1.5	1.376	0.15 - 2.4
Fludioxonil***		●	1.5	1.483	0.75 - 2.4
Hexythiazox		●	1.5	1.632	0.15 - 2.4
Imazalil		●	1.5	1.600	0.15 - 2.4
Imidacloprid		●	1.5	1.398	0.15 - 2.4
Kresoxim-methyl		●	1.5	1.332	0.15 - 2.4
Malathion		●	1.5	1.580	0.15 - 2.4
Metalaxyl		●	1.5	1.658	0.15 - 2.4
Methiocarb		●	1.5	1.520	0.15 - 2.4
Methomyl		●	1.5	1.591	0.15 - 2.4
MGK-264		●	1.5	1.904	0.15 - 2.4
Myclobutanil		●	1.5	1.643	0.15 - 2.4
Naled		●	1.5	1.758	0.15 - 2.4

*** Compounds were tested on GCMS. All others on LCMS. Continued on next page...

Report: Quality Check



OLCC License No. 10087092BDA | ORELAP ID. 4147

545 SW 2nd Street, Corvallis OR. 97333 | 541.257.5002 | services@preelab.com | Preelab.com

For OLCC/OHA Compliance Purposes.

Pesticide Analysis

Quality Control Detail

Pesticide Name	MB	LCS	Expected Value (ppm)	Tested Value (ppm)	Pass Criteria (ppm)
Oxamyl		●	1.5	1.432	0.15 - 2.4
Paclobutrazol		●	1.5	1.657	0.15 - 2.4
Parathion-methyl***		●	1.5	1.568	0.75 - 2.4
Permethrin, cis-trans		●	1.5	1.811	0.15 - 2.4
Phosmet		●	1.5	1.375	0.15 - 2.4
Piperonyl butoxide		●	1.5	1.558	0.15 - 2.4
Prallethrin		●	1.5	1.509	0.15 - 2.4
Propiconazole***		●	1.5	1.656	0.15 - 2.4
Propoxur		●	1.5	1.738	0.15 - 2.4
Pyrethrins (3 isomers)		●	1.5	1.651	0.15 - 2.4
Pyridaben		●	1.5	1.631	0.15 - 2.4
Spinosad		●	1.5	1.725	0.15 - 2.4
Spiromesifen		●	1.5	1.583	0.15 - 2.4
Spirotetramat		●	1.5	1.658	0.15 - 2.4
Spiroxamine		●	1.5	1.522	0.15 - 2.4
Tebuconazole		●	1.5	1.700	0.15 - 2.4
Thiacloprid		●	1.5	1.308	0.15 - 2.4
Thiamethoxam		●	1.5	1.327	0.15 - 2.4
Trifloxystrobin		●	1.5	1.665	0.15 - 2.4

*** Compounds were tested on GCMS. All others on LCMS.

Definitions

- Limit of Quantitation (LOQ): The minimum level, concentration, or quantity of a target analyte that can be reported with a specific degree of confidence.
- Method Blank (MB): A quality control sample that is free of the analyte being measured.
- Laboratory Control Sample (LCS): A quality control sample with a known amount of the analyte used to demonstrate accuracy.
- Field Duplicate: A second sample collected in the field using the same sampling method as the primary sample.
- Action Limit: Analyte levels set by the state of Oregon (OAR 333-007) indicating that follow-up action is necessary.
- ppm: parts per million, equivalent to 1 µg/g and 1 µg/L or 0.001 mg/g and 0.001 mg/L
- COA: Certificate of Analysis.

Calculations

- Cannabinoid Potency :
Wet WT% = (Exported concentration ppm) x (Dilution) x (Extraction Vol./Wet wt mg) x 100
Total THC% = (%THCA) x 0.877 + (%THC)
Total CBD% = (%CBDA) x 0.877 + (%CBD)
Total THC (Dry WT)% = % total THC(wet) / [1-(% moisture/100)]
Total CBD (Dry WT)% = % total CBD(wet) / [1-(% moisture/100)]
- Percentage Recovery :
% Rec. = [(Amount measured) / (Known amount)] * 100